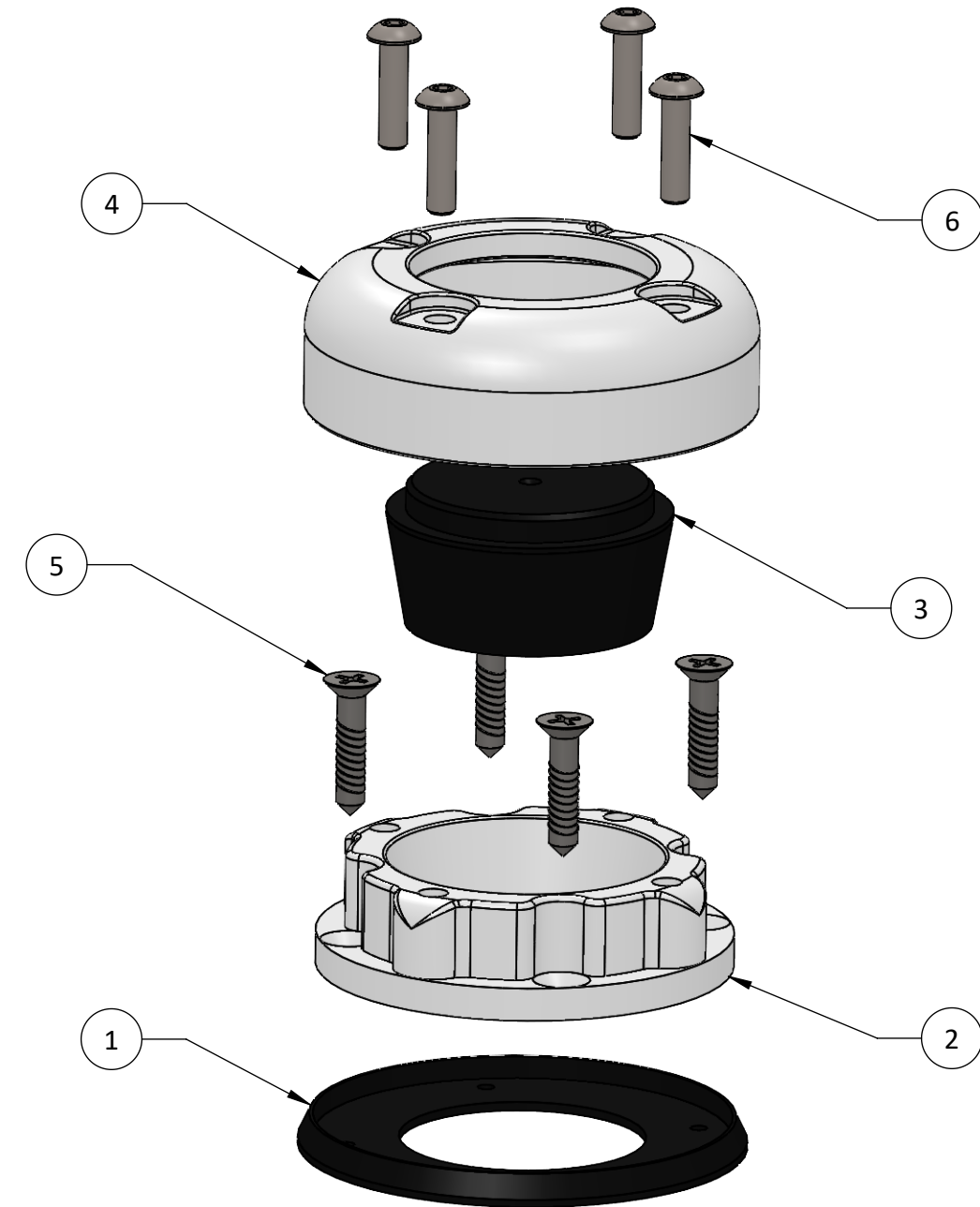


ITEM NO.	PART NUMBER	DESCRIPTION	QTY.
1	CG2R.01	CABLE SEAL GASKET	1
2	CG2R.02	CABLE SEAL BASE	1
3	CG2R.03	TAPERED PLUG	1
4	CG2R.04	CABLE SEAL COVER	1
5	634SMS316	#6 SELF TAPPING SHEET METAL SCREW x 3/4" LONG	4
6	M416BHCS	M4x0.7x16 BHCS	4

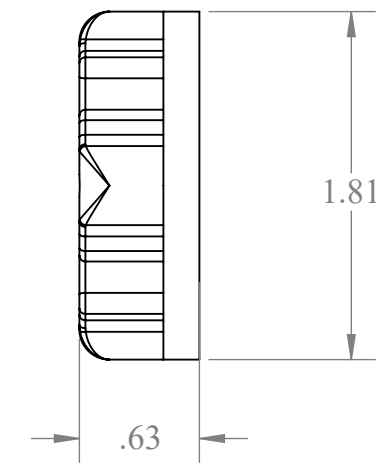
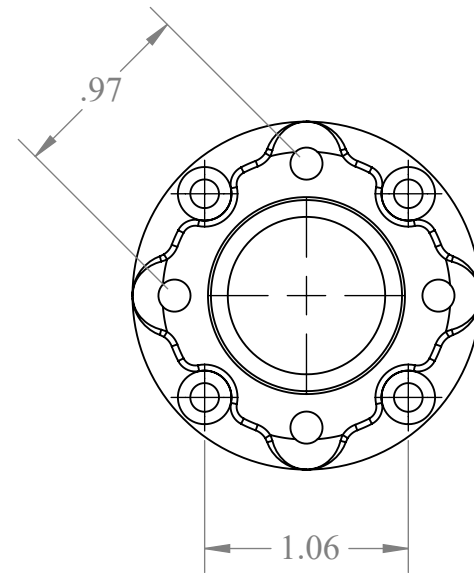
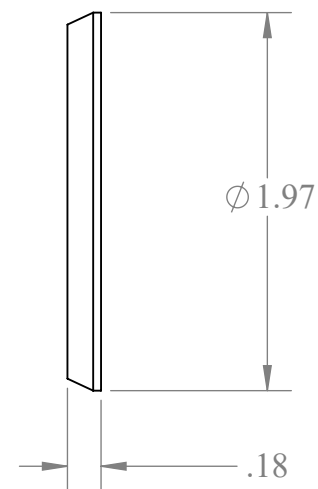
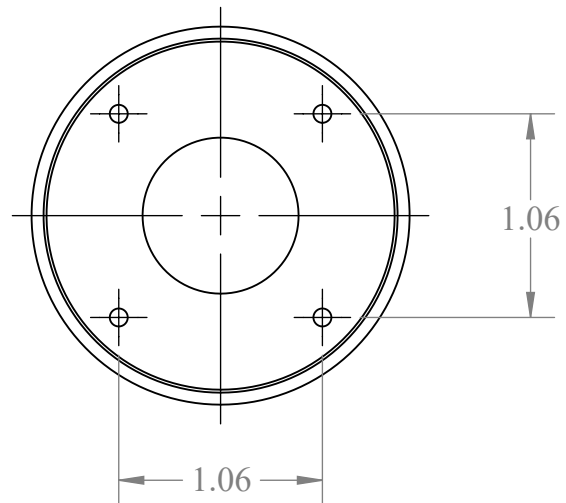
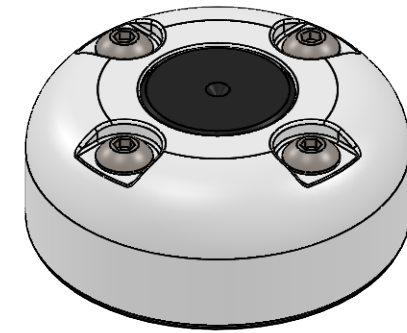
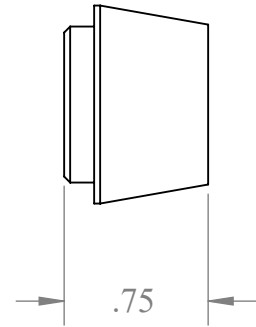
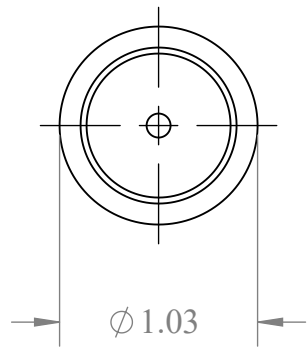
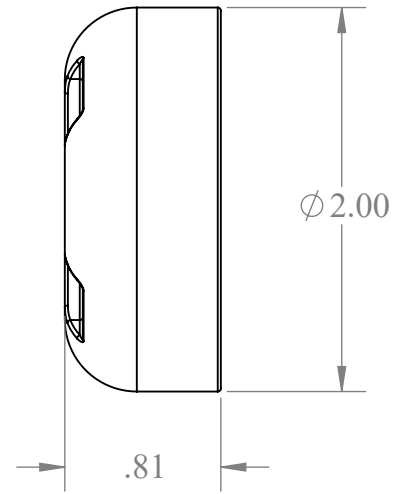
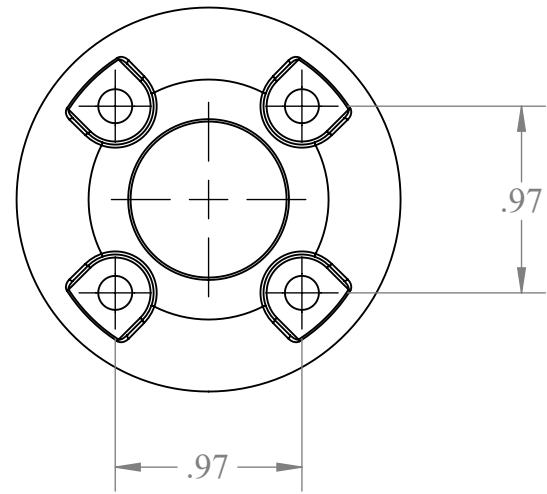
**NOTES:**

- BEFORE BEGINNING THIS INSTALLATION MAKE SURE THAT ALL OF YOUR CABLES ARE ROUTED PROPERLY.
- FOR THIS INSTALLATION YOU WILL NEED A STRAIGHT EDGE, A POWER DRILL, HOLE SAW, ALLEN WRENCHES, A MARKER, AND A KNIFE OR RAZOR BLADE IN ADDITION TO THE CONTENTS OF THIS KIT.
- ITEMS ① - ④ AND THE QUANTITY OF ITEM ⑤ WILL VARY DEPENDING ON WHICH CABLE SEAL YOU ARE INSTALLING.
- MARINE SEALANT IS RECOMMENDED FOR THIS INSTALLATION.
- THE IMAGES IN THE STEP BY STEP PORTION OF THESE INSTRUCTIONS ARE OF THE CG20, HOWEVER THE INSTALLATION PROCESSES FOR THE CG30 AND CGM17 ARE IDENTICAL.



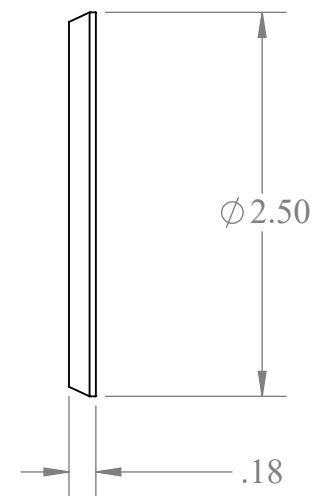
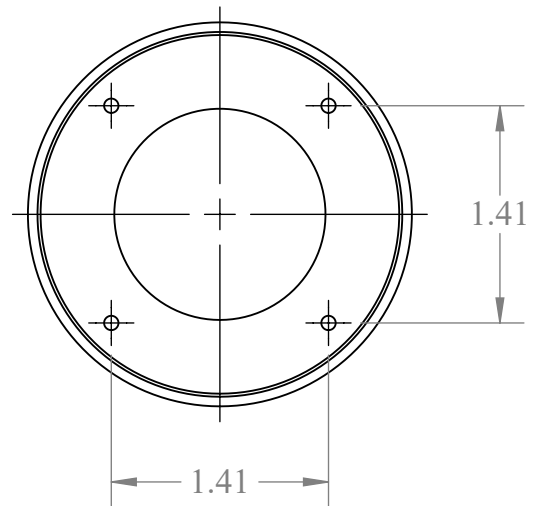
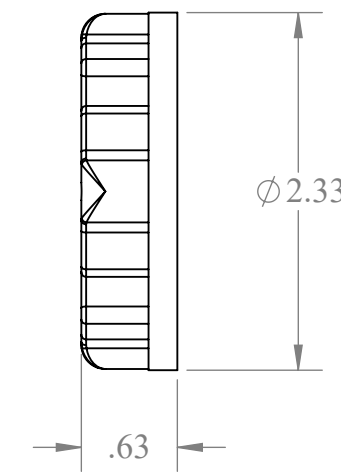
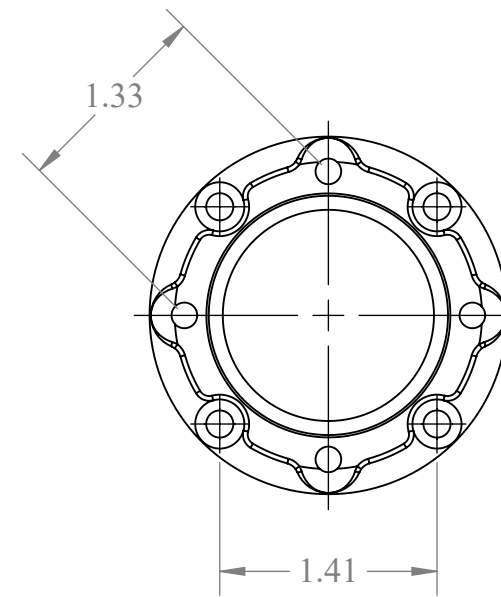
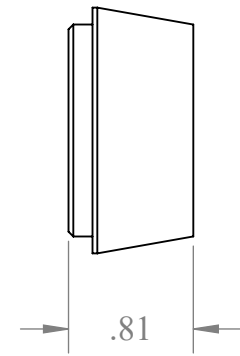
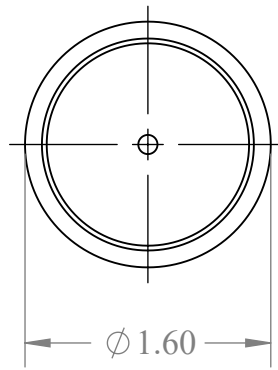
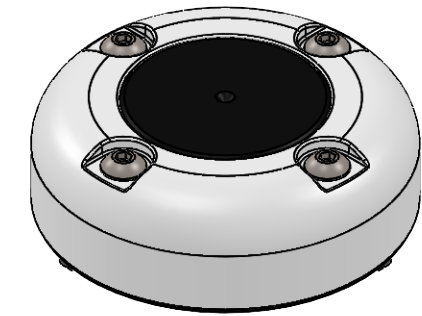
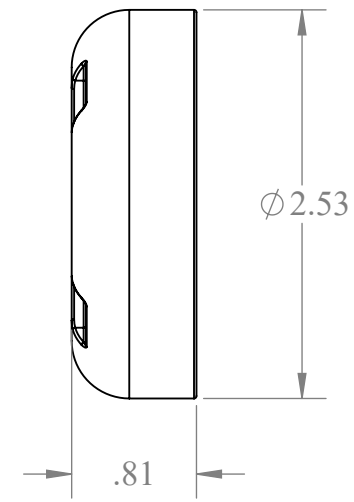
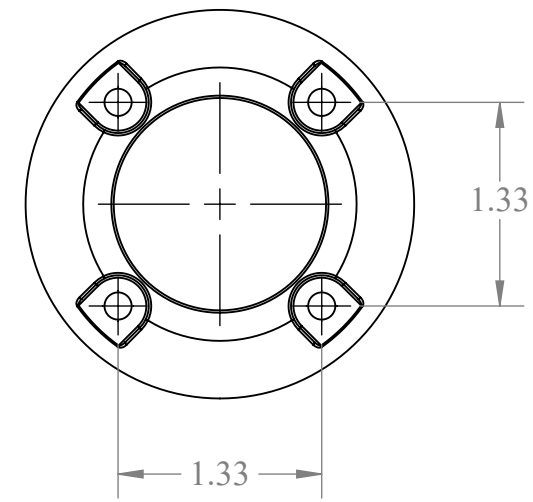
## CABLE SEAL

For help e-mail  
[info@seaviewglobal.com](mailto:info@seaviewglobal.com)  
 ph. 1-800-655-7922



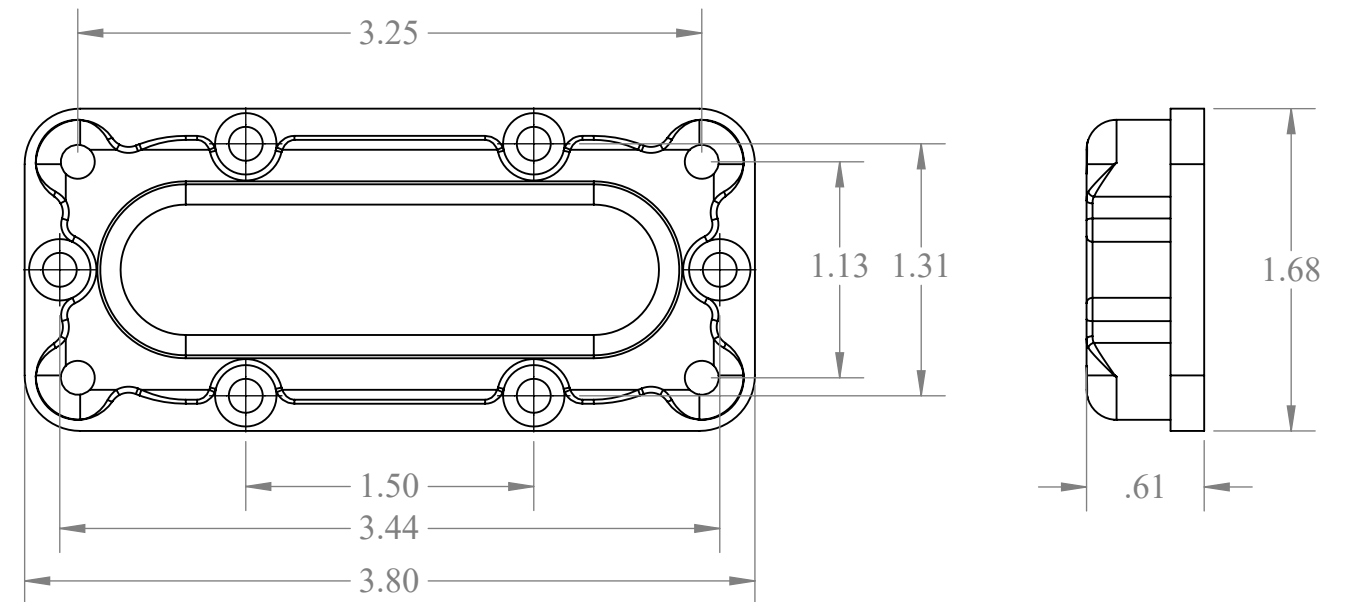
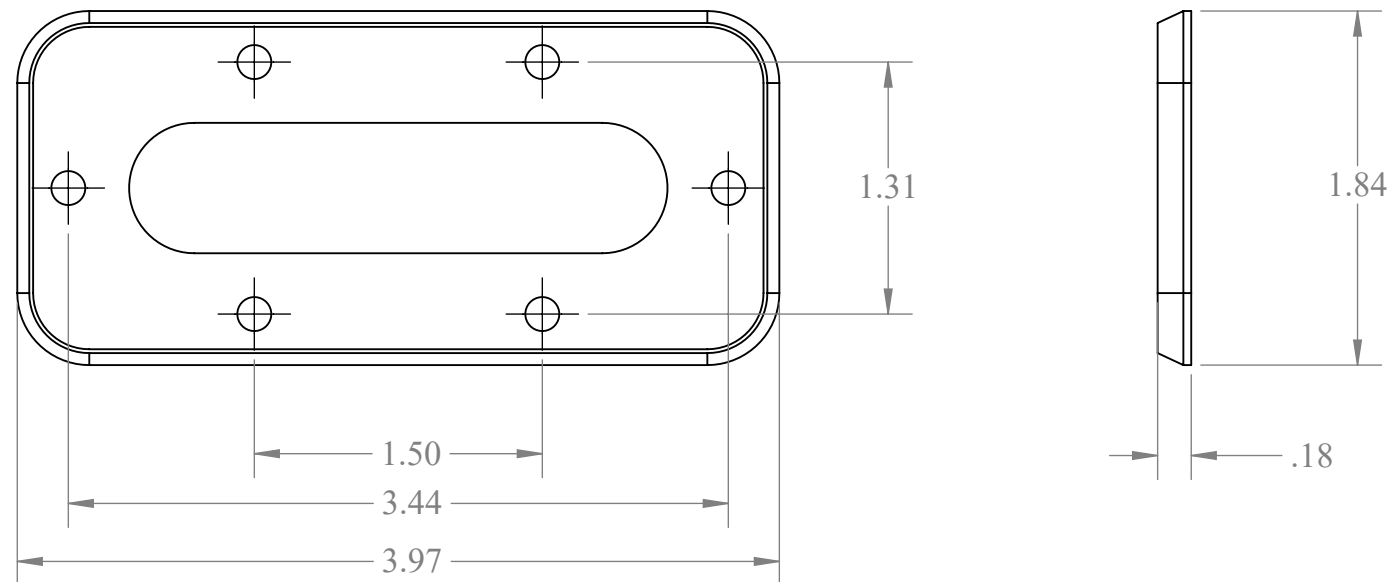
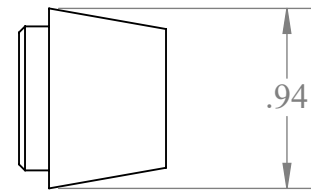
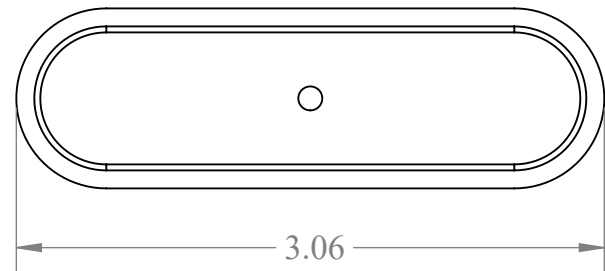
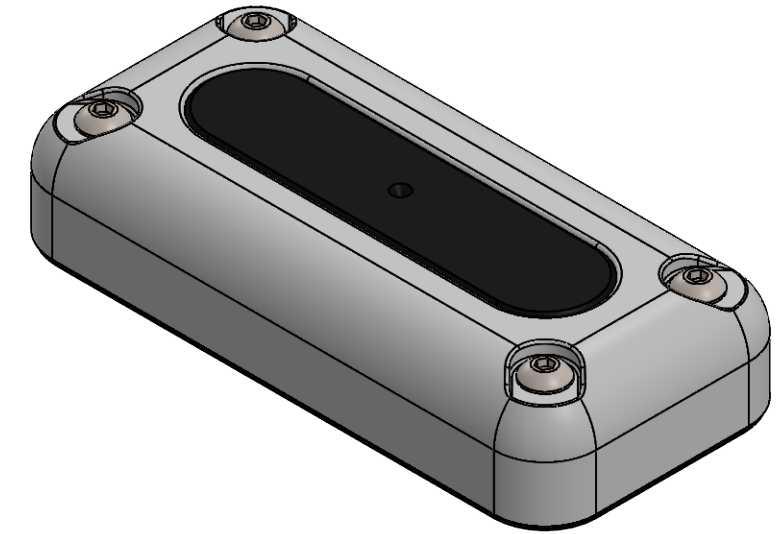
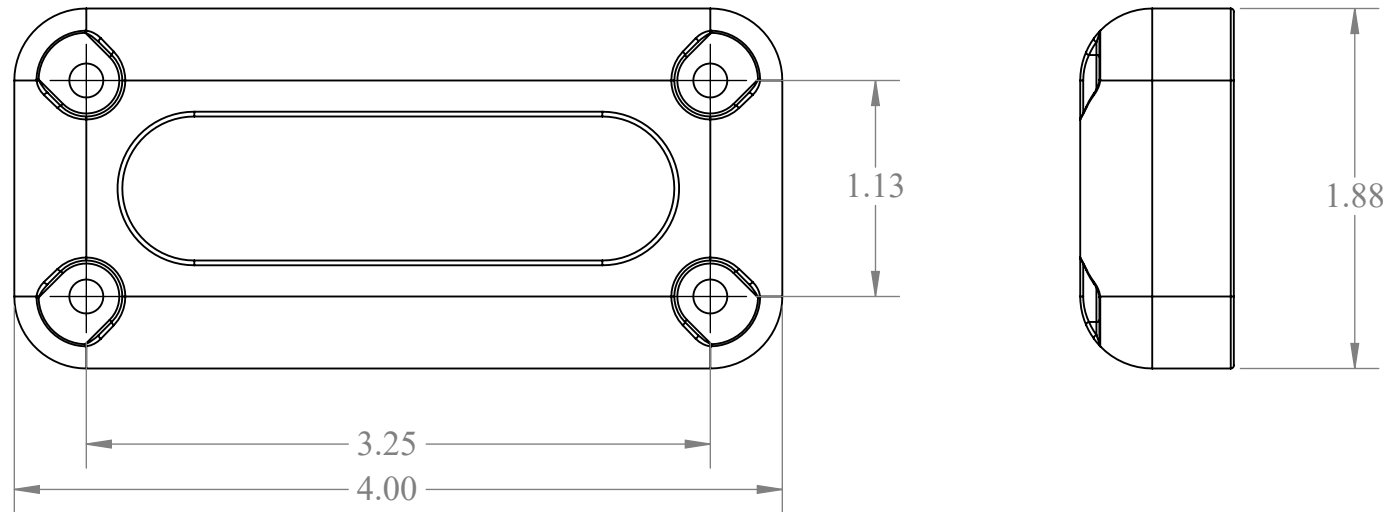
**CG20PB/CG20PG/CG20PW/CG20SB/CG20SS/CG20SW**

For help e-mail  
info@seaviewglobal.com  
ph. 1-800-655-7922



CG30PB/CG30PG/CG30PW/CG30SB/CG30SS/CG30SW

For help e-mail  
info@seaviewglobal.com  
ph. 1-800-655-7922



**CGM17PB/CGM17PG/CGM17PW**  
**CGM17SB/CGM17SS/CGM17SW**

For help e-mail  
[info@seaviewglobal.com](mailto:info@seaviewglobal.com)  
 ph. 1-800-655-7922

## ***INSTALLATION INSTRUCTIONS BEGIN ON NEXT PAGE***

NOTE: It is strongly advised that all installations are carried out by an authorized installer who possesses the necessary expertise and experience in marine equipment installation. Furthermore, prior to the final installation process, we recommend performing a dry fit assembly of all components. This entails fitting the components in their designated positions on the boat without permanently affixing them. This step allows for careful assessment of compatibility, alignment, and any potential adjustments that may be required before proceeding with the actual installation.

---

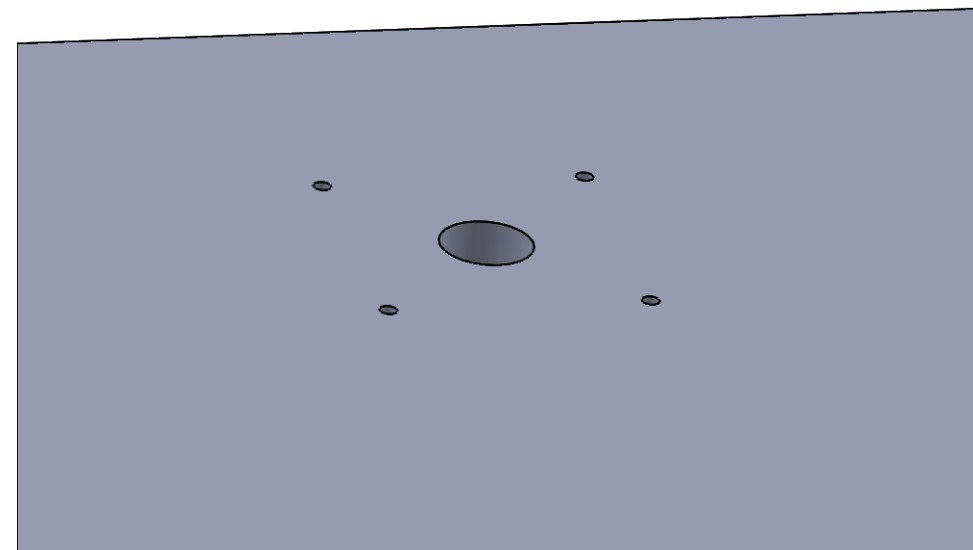
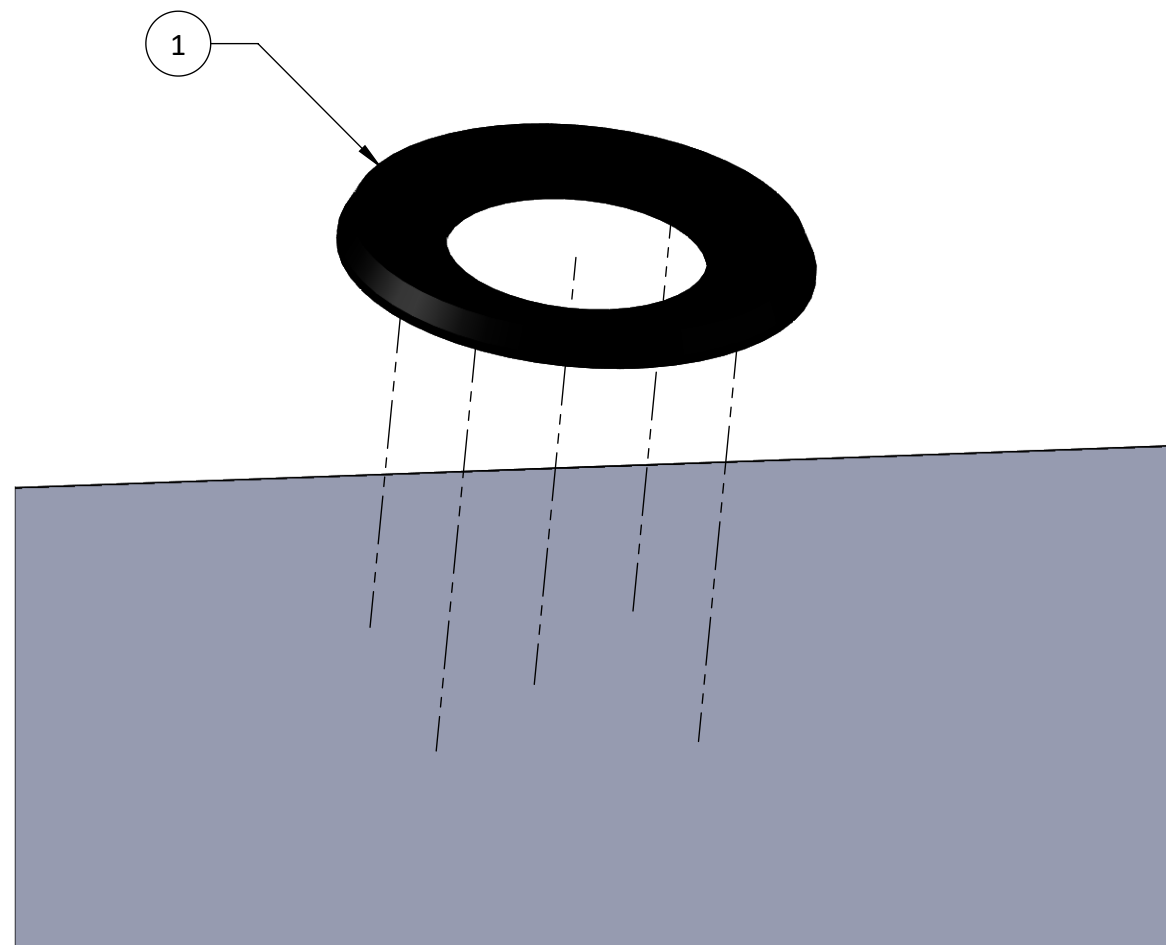
For help e-mail  
[info@seaviewglobal.com](mailto:info@seaviewglobal.com)  
ph. 1-800-655-7922

**1** Using a straight edge, make sure that the mounting surface is flat. Then mark the four bolt holes and the center cable hole using the cable seal gasket (item 1) as a template.

Once the holes are marked we recommend drilling a pilot hole ~0.098-0.110 inches (2.5-2.8mm).

Common drill bit sizes: #36 (0.1065 inches) or #37 (0.1040 inches).

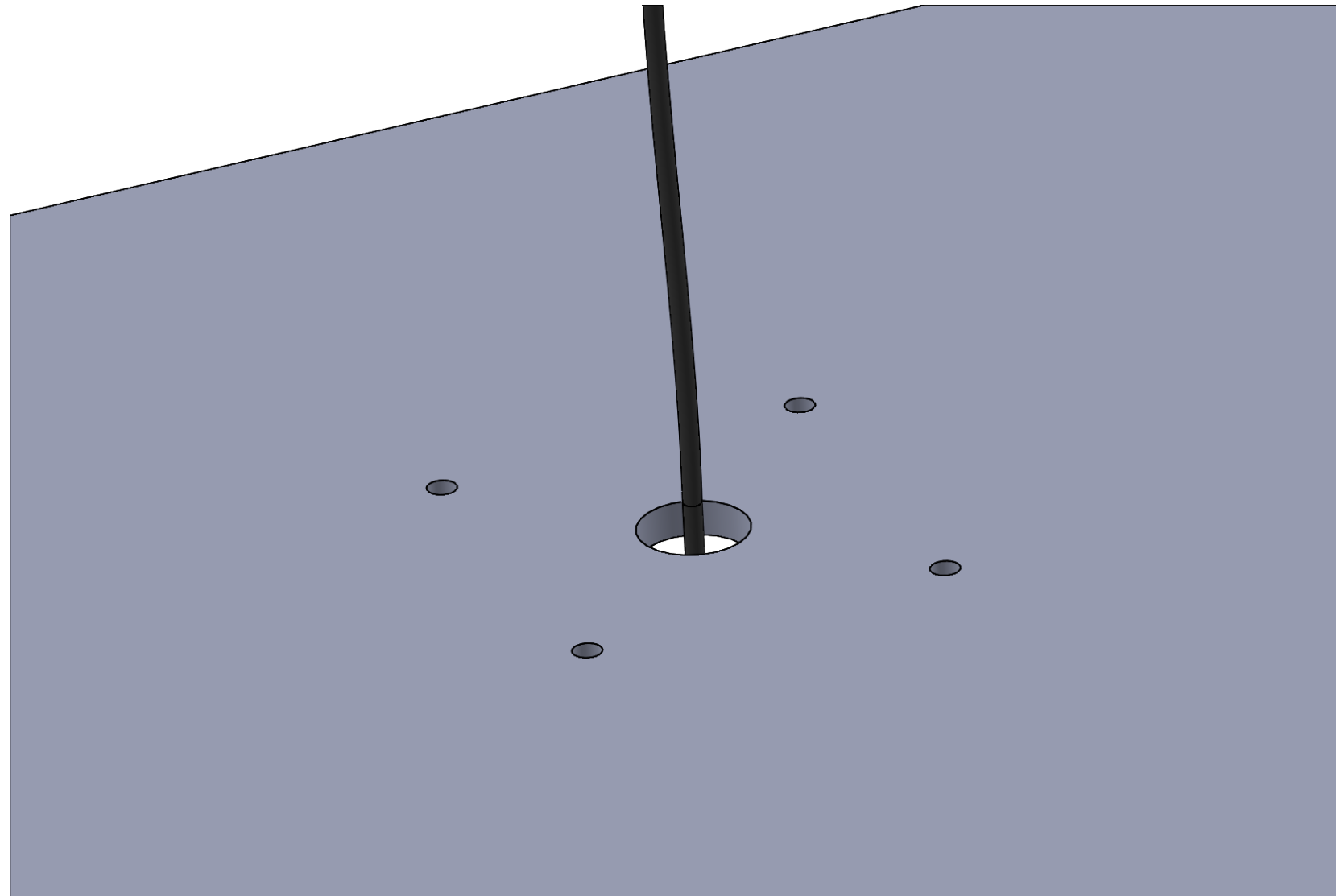
For thin sheet metal (e.g., <1/16 inch or 1.5mm), a slightly smaller hole (e.g., #38 or 0.1015 inches) may work to ensure good grip. You may also want to thru-bolt if the material is too thin. For thicker or harder materials (e.g., steel vs. aluminum), use a slightly larger hole (e.g., #36 or #35, 0.110 inches) to reduce driving force.



## CABLE SEAL

For help e-mail  
[info@seaviewglobal.com](mailto:info@seaviewglobal.com)  
ph. 1-800-655-7922

**2** Route the cables through the center hole as shown.



---

**CABLE SEAL**

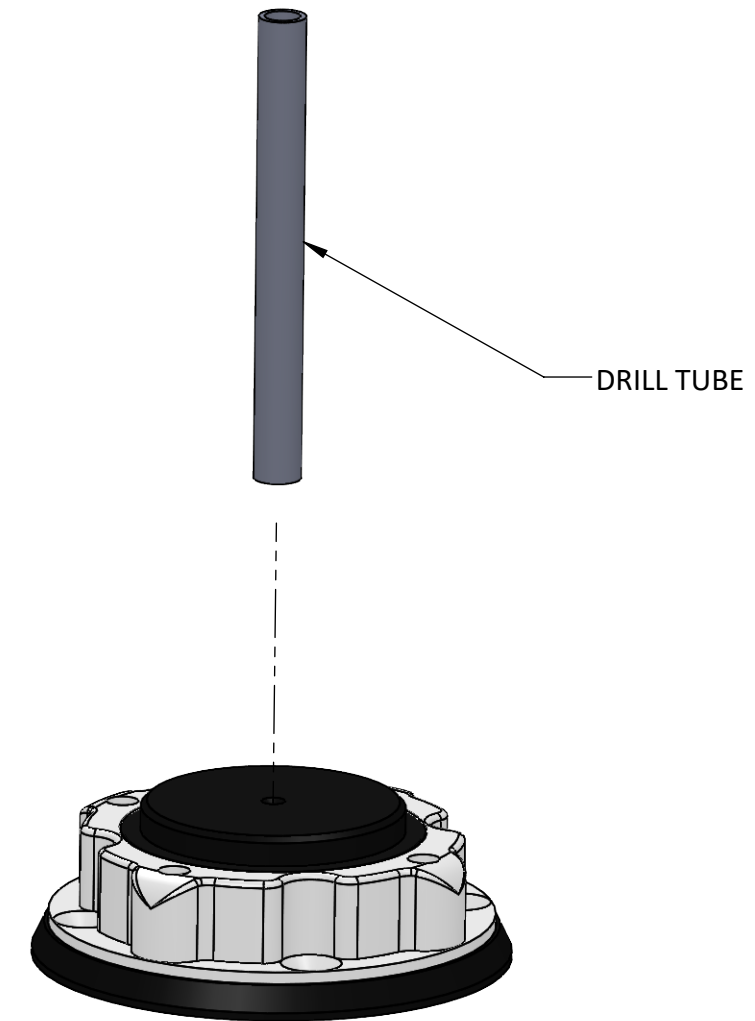
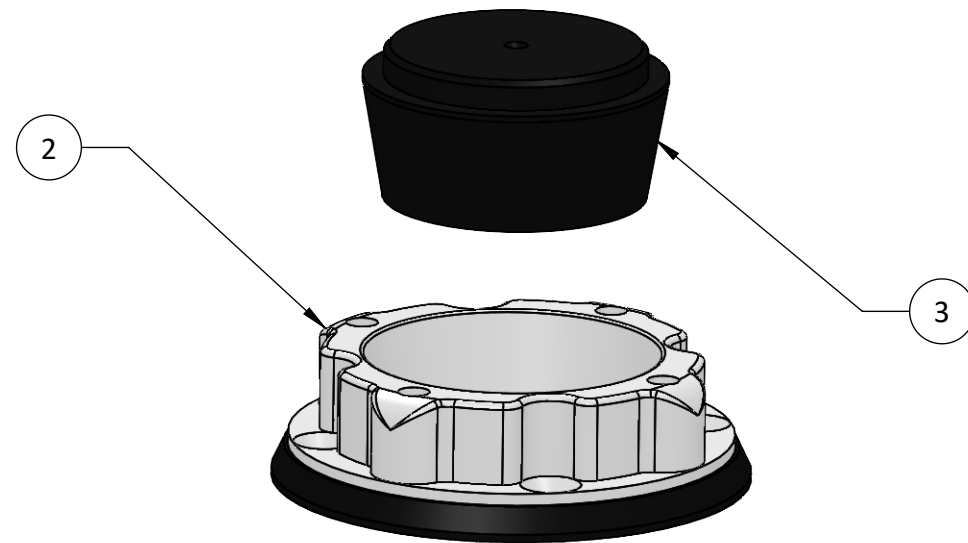
For help e-mail  
[info@seaviewglobal.com](mailto:info@seaviewglobal.com)  
ph. 1-800-655-7922

# 3A Recommended method. Measure your cable diameter and select the appropriate drill tube provided (cable diameter +.01/-.03").

Insert tube into power drill and leave enough length to go all the way through the tapered plug (item 3 ).

Then place the tapered plug in the cable seal base (item 2 ), apply a small amount of soapy water to the tube, and drill the rubber plug.

Afterwards, remove the tapered plug from the cable seal base.



#### NOTES:

1. MAKE SURE THAT YOU DO NOT DRILL WITHIN 1/8" (3.2mm) FROM THE EDGE OF THE TAPERED PLUG (ITEM 3 ).
2. THIS CABLE SEAL BASE WILL WORK WITH MULTIPLE CABLES. MAKE SURE EACH CABLE HAS ITS OWN HOLE AND THERE IS AT LEAST .125" OF RUBBER BETWEEN EACH HOLE.
3. THE CABLE SEAL YOU ARE INSTALLING MAY LOOK SLIGHTLY DIFFERENT THAN THE ONE IN THESE IMAGES, HOWEVER ALL STEPS REGARDING THE INSTALLATION OF THE CABLE SEAL ARE THE SAME IN ALL CASES.

## CABLE SEAL

For help e-mail  
info@seaviewglobal.com  
ph. 1-800-655-7922

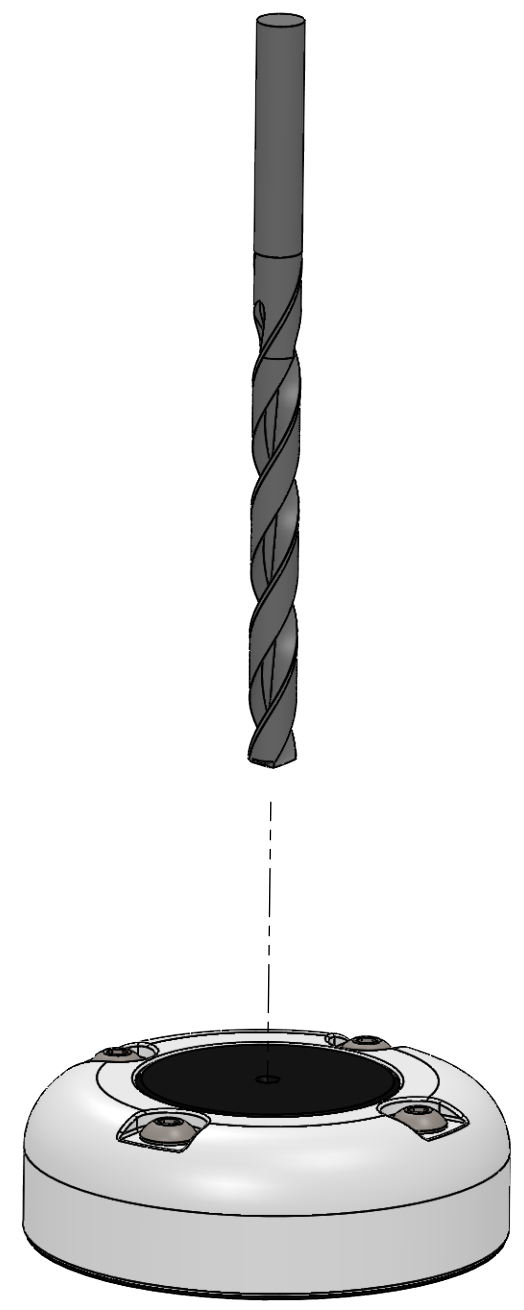
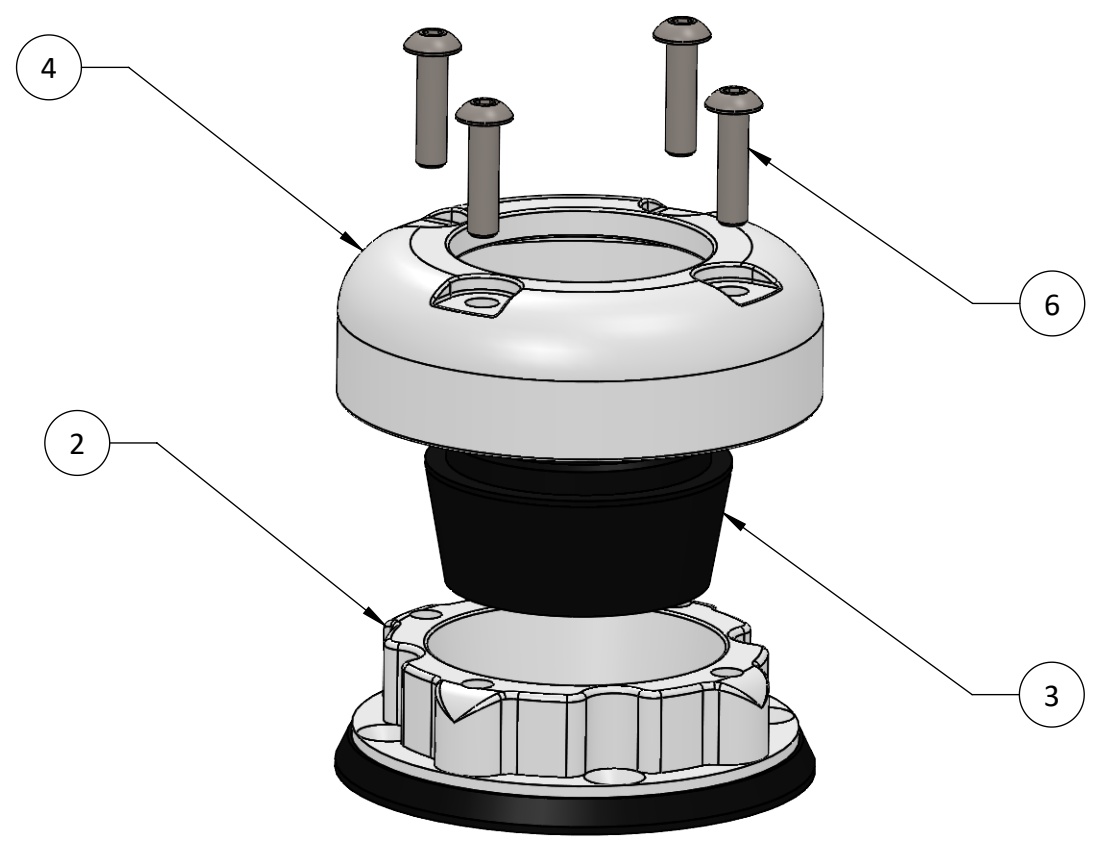
# 3B

If you followed step 3A, skip this step.

If using a drill bit to drill the tapered plug (item 3), a dry fit of items 2 - 4 and 6 is recommended. The cover should be securely tightened to help hold the rubber while drilling.

Use a drill bit that is slightly larger than your cable, the drill bit should be run repeatedly through the rubber.

Afterwards, remove the tapered plug from the cable seal base (item 2).



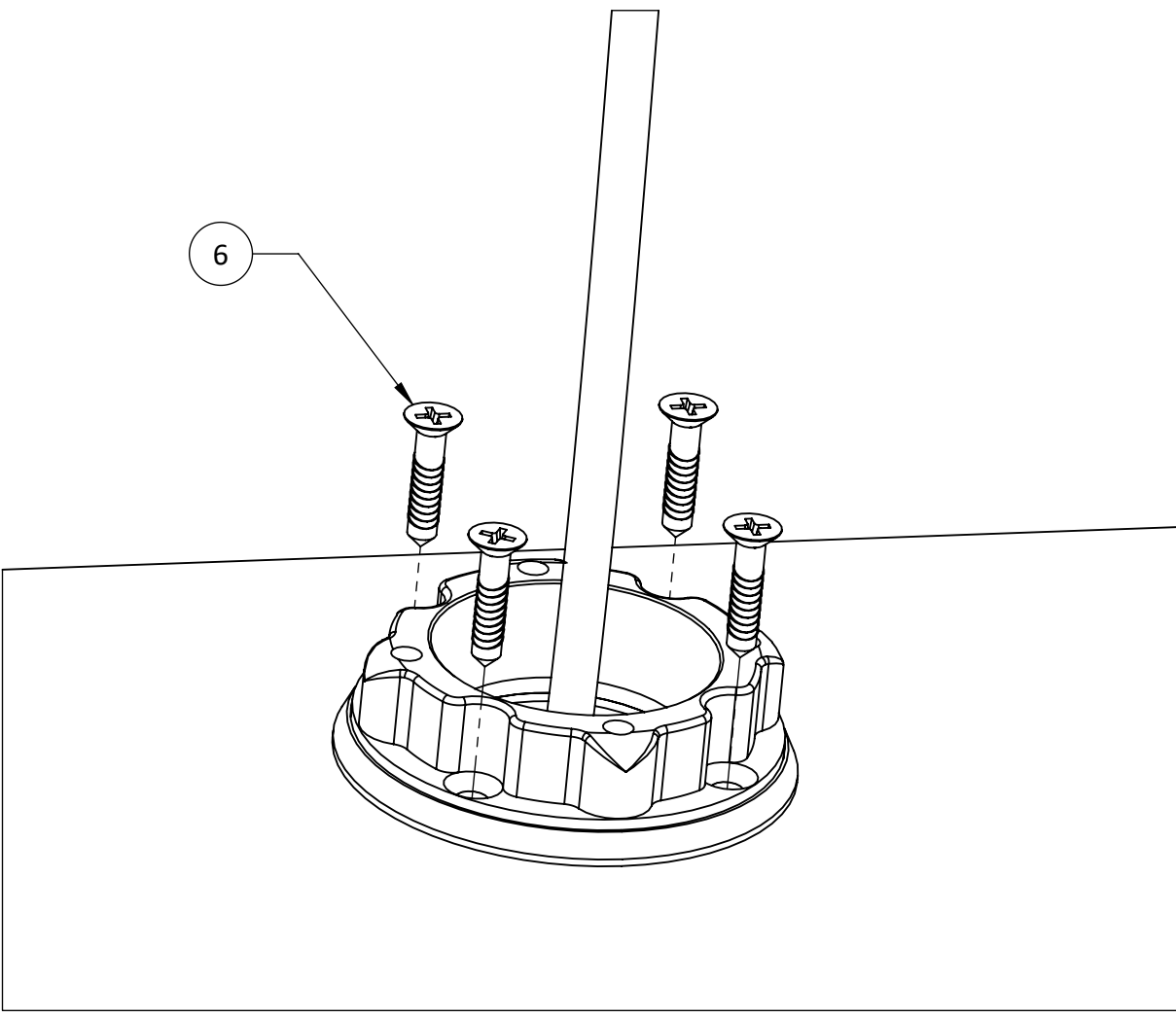
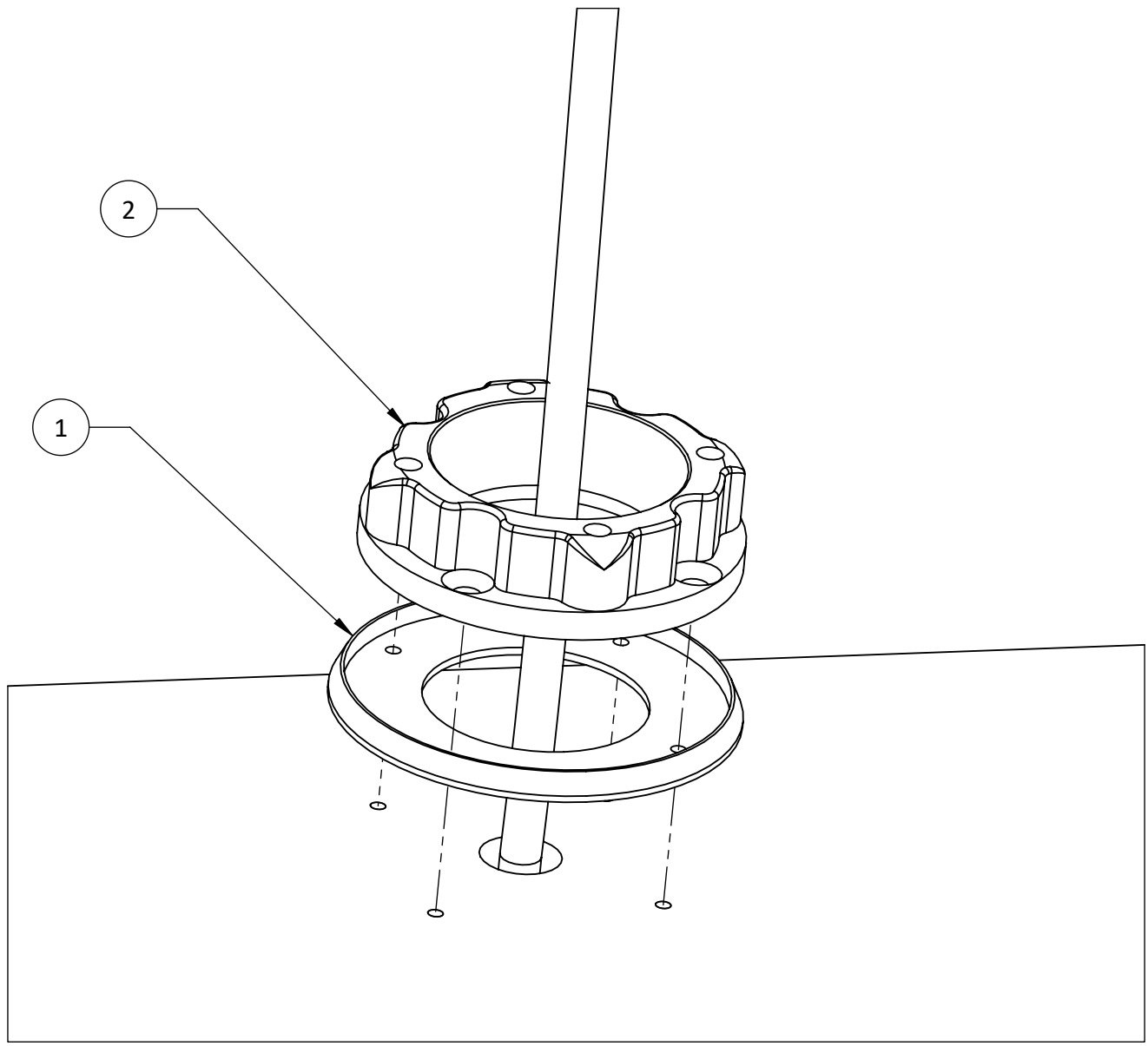
- NOTES:
1. MAKE SURE THAT YOU DO NOT DRILL WITHIN 1/8" (3.2mm) FROM THE EDGE OF THE TAPERED PLUG (ITEM 3).
  2. THIS CABLE SEAL BASE WILL WORK WITH MULTIPLE CABLES. MAKE SURE EACH CABLE HAS ITS OWN HOLE AND THERE IS AT LEAST .125" OF RUBBER BETWEEN EACH HOLE.
  3. THE CABLE SEAL YOU ARE INSTALLING MAY LOOK SLIGHTLY DIFFERENT THAN THE ONE IN THESE IMAGES, HOWEVER ALL STEPS REGARDING THE INSTALLATION OF THE CABLE SEAL ARE THE SAME IN ALL CASES.

## CABLE SEAL

For help e-mail  
info@seaviewglobal.com  
ph. 1-800-655-7922

**4** Route the cables through the center of the cable seal gasket and base (items 1 and 2) and place them over the holes you drilled.

Then use item 6 to fasten the cable seal base to the surface.

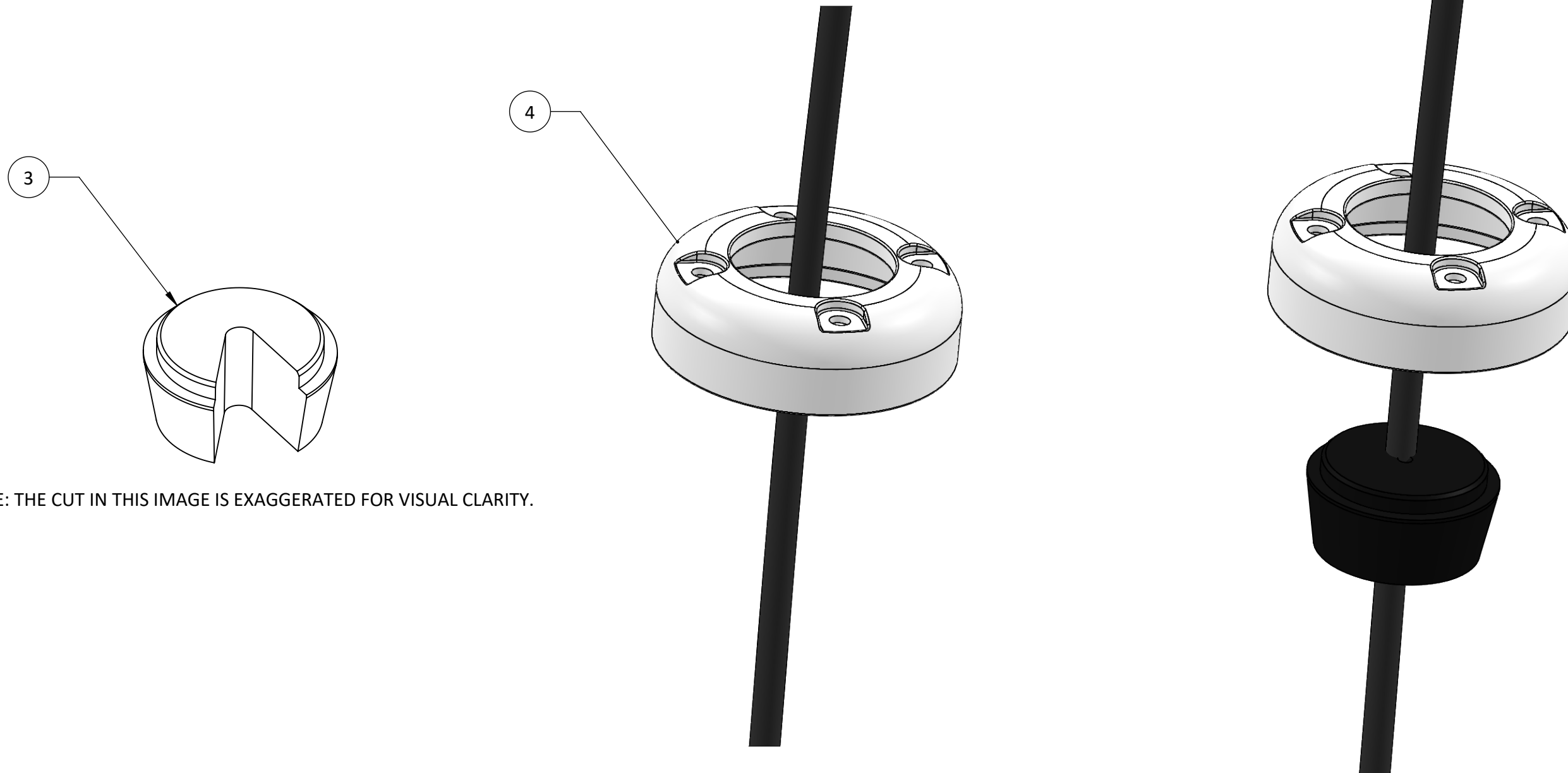


## CABLE SEAL

For help e-mail  
info@seaviewglobal.com  
ph. 1-800-655-7922

**5** Using a sharp razor blade or knife, cut a slit in the tapered plug (item 3) from the cable hole outward.

Then slide the cable seal cover (item 4) over the electronic cable and wrap the tapered plug around the electronic cable.



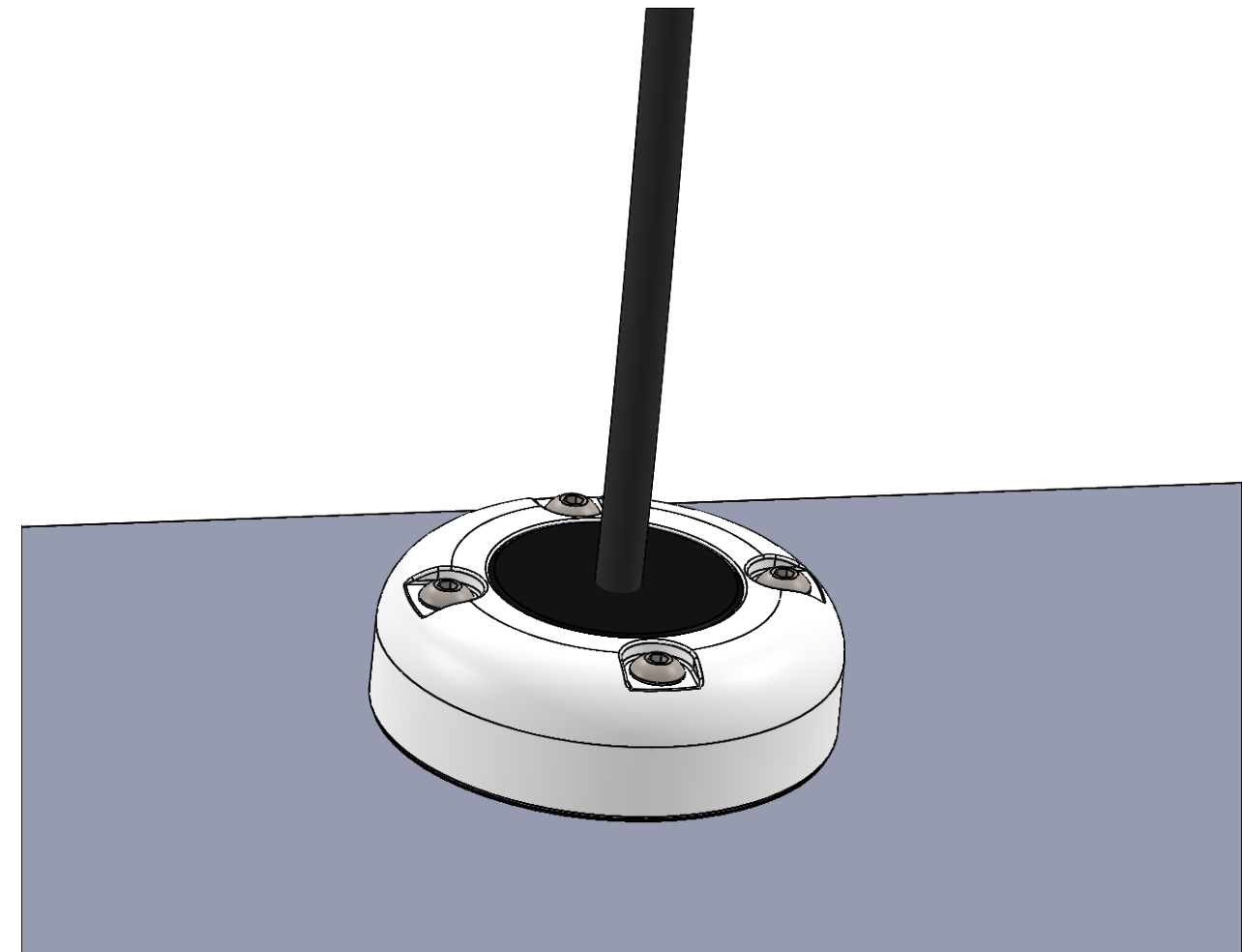
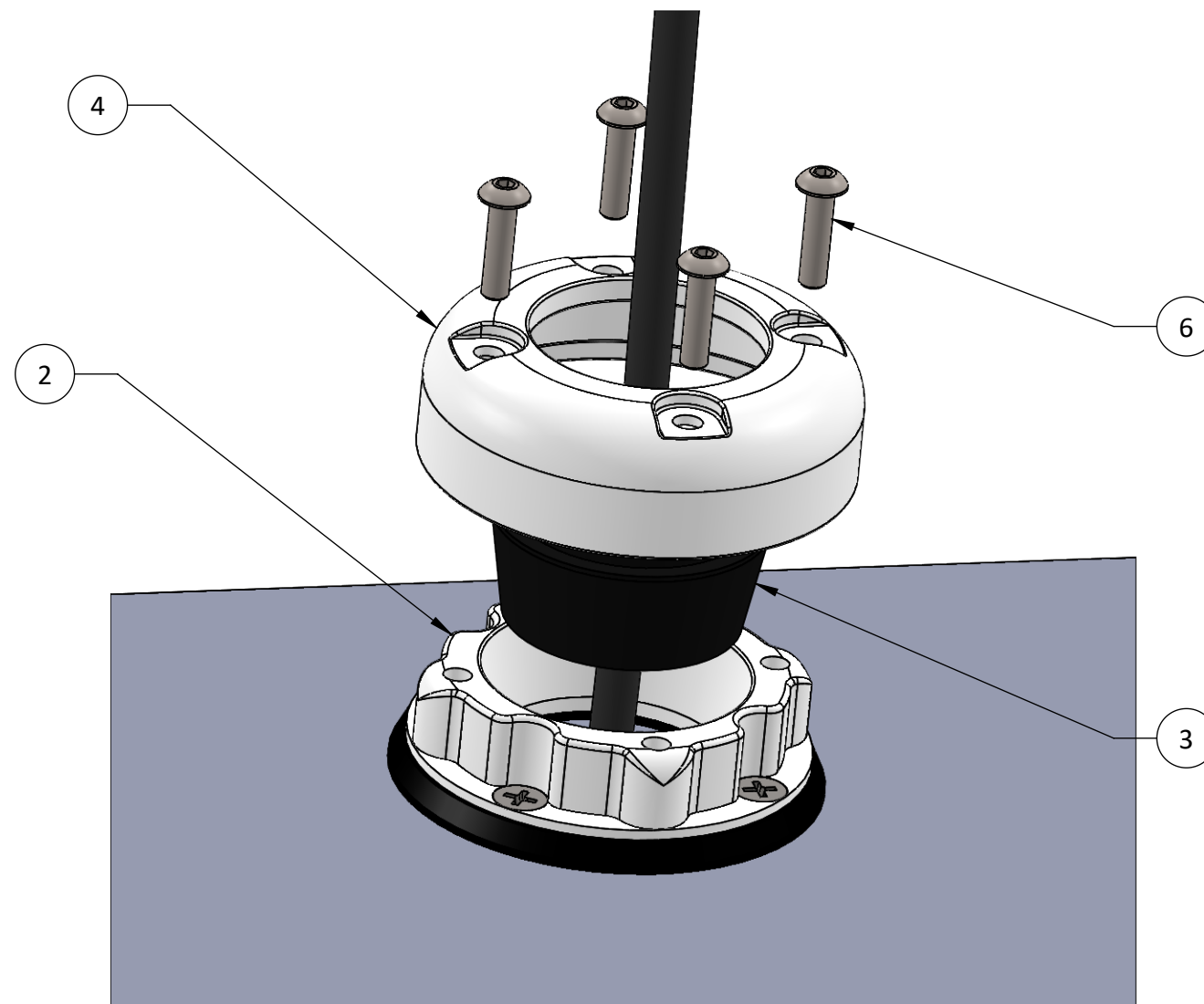
NOTE: THE CUT IN THIS IMAGE IS EXAGGERATED FOR VISUAL CLARITY.

## CABLE SEAL

For help e-mail  
[info@seaviewglobal.com](mailto:info@seaviewglobal.com)  
ph. 1-800-655-7922

**6** Insert the electronic cable and tapered plug (item 3) into the cable seal base (item 2) and slide the cable seal cover (item 4) onto the plastic base making sure that all four bolt holes line up.

Apply marine sealant to all four allen head screws (item 6) and tighten.



NOTE: THE CABLE SEAL YOU ARE INSTALLING MAY LOOK SLIGHTLY DIFFERENT THAN THE ONE IN THESE IMAGES, HOWEVER ALL STEPS REGARDING THE INSTALLATION OF THE CABLE SEAL ARE THE SAME IN ALL CASES.

## CABLE SEAL

For help e-mail  
info@seaviewglobal.com  
ph. 1-800-655-7922