

RETROFIT CABLE SEAL INSTRUCTIONS

SEAVIEW

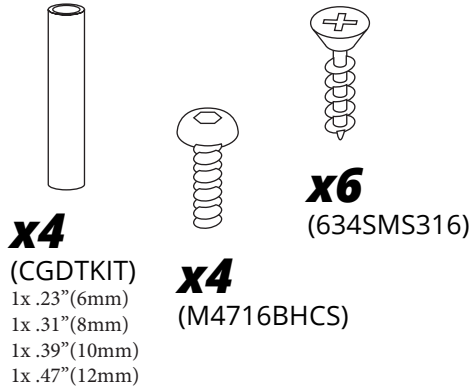
For Part Numbers:

CG20PG2 | CG30PG2

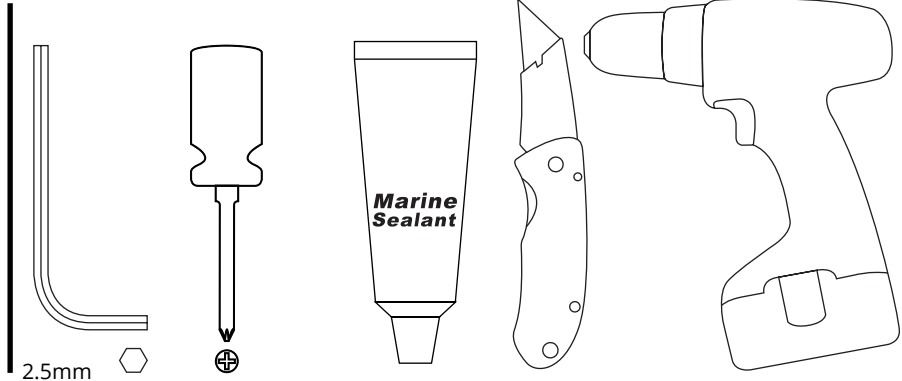
Refer to website for most up to date instructions and videos.

www.seaviewglobal.com

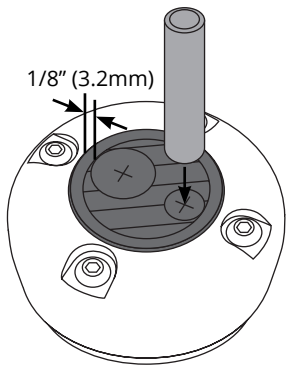
PARTS INCLUDED



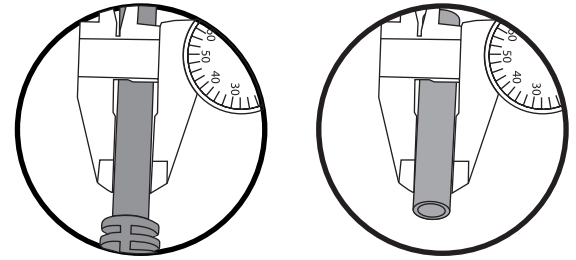
SUGGESTED TOOLS



BEFORE YOU BEGIN



- It is not necessary to dry fit if using drill tubes. Dry fit is recommended if using a drill bit to securely hold the rubber in place.
- Make sure that you do not drill within 1/8" (3.2mm) from the edge of the tapered plug.
- Drill tube is recommended. However, if using a drill bit, a slightly larger drill bit is needed for drilling the rubber.
- Each cable seal will work with multiple cables. Make sure each cable has its own hole and there is at least .125" of rubber between each hole.

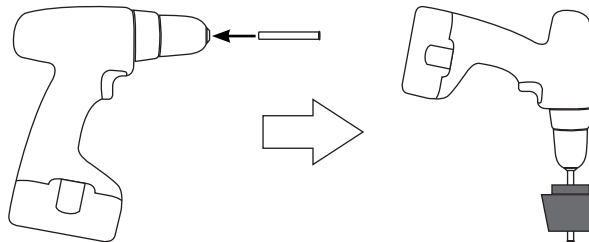


Measure your cable diameter and select the appropriate drill tube provided. Cable diameter +.01" / -.03" (+.0003mm / -.001mm)

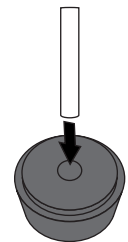
1



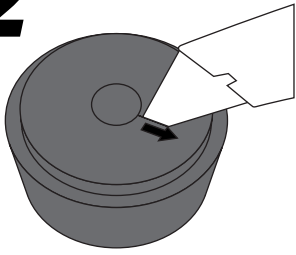
Take one of the four drill tubes (included with the Retrofit Cable Seal). Double check to make sure the tube is the right diameter for your installation.



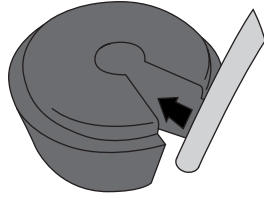
Insert drill tube into drill motor, and leave enough length to get through the tapered plug.



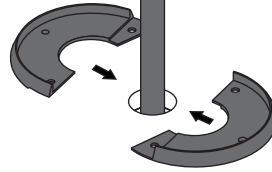
Apply small amount of soapy water to the tube and slowly drill the rubber plug.

2

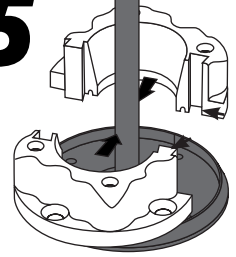
Using a sharp razor blade or knife, cut the rubber grommet from the cable hole outward.

3

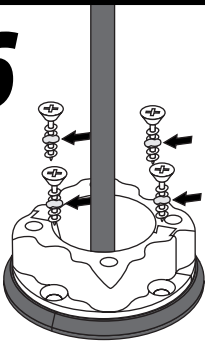
Wrap the rubber grommet around the electronic cable.

4

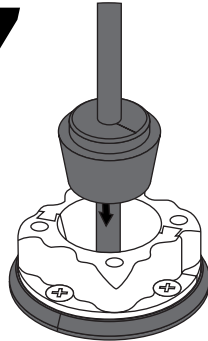
Apply the rubber base gasket to the mounting surface.

5

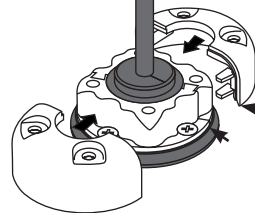
Combine the two halves of the plastic base and mount onto rubber base gasket. Be sure to stagger the seams as shown by the two black arrows.

6

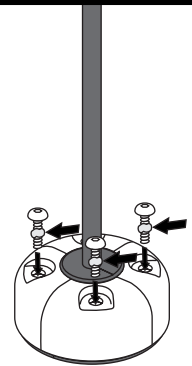
Secure the base to the mounting surface with the four screws. Apply marine sealant to the threads (optional).

7

Slide the rubber plug down into the plastic base.

8

Combine the two halves of the outer shell. These will snap together with a click. Be sure to stagger the seams as shown by the two black arrows.

9

Apply marine sealant (optional) to the four allen head screws and tighten.

SEAVIEW

800-655-7922
www.seaviewglobal.com

13-05012025