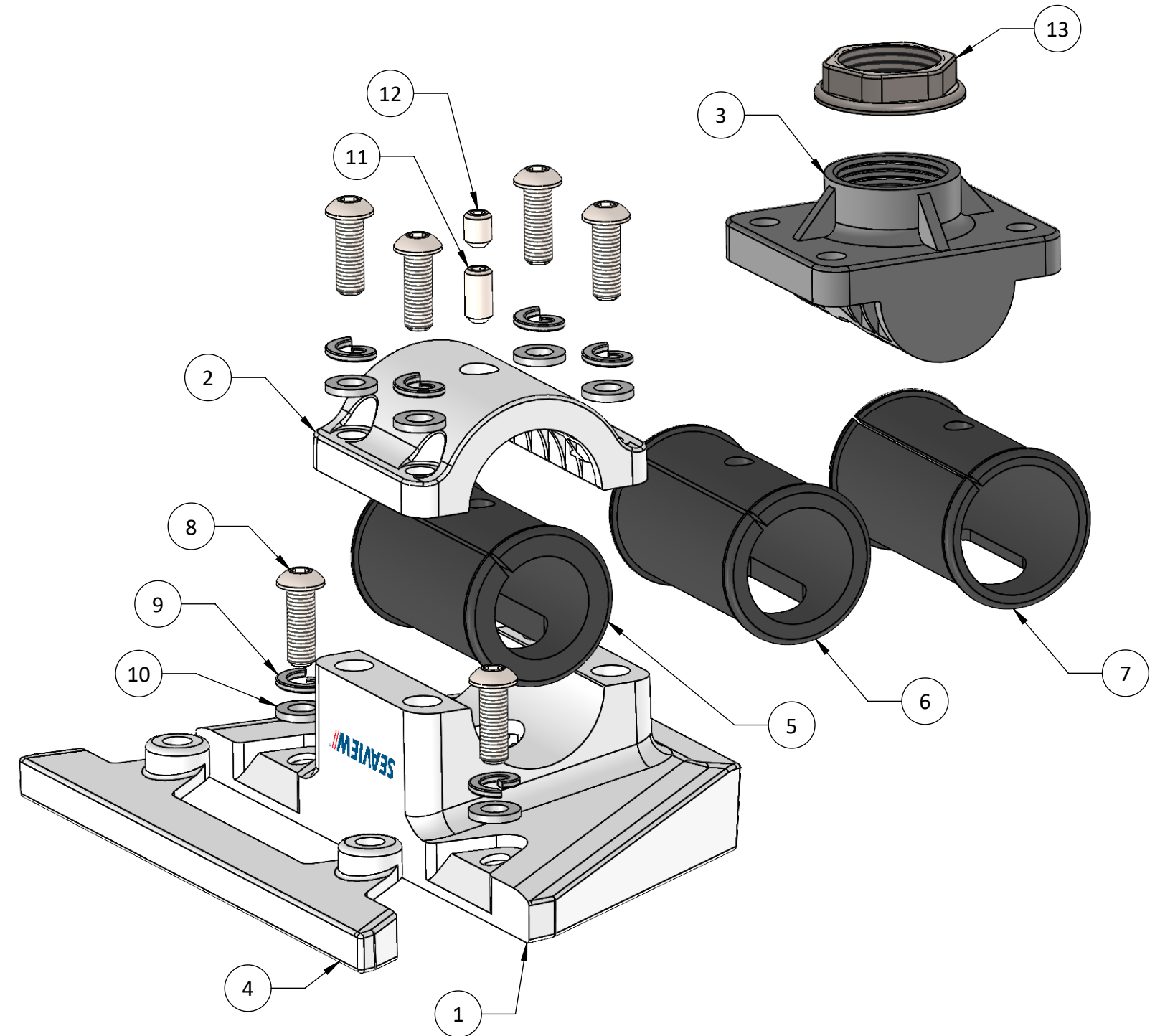


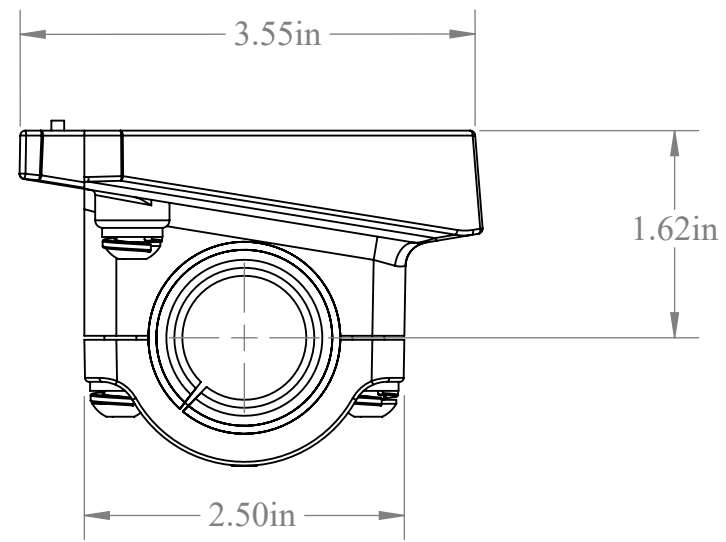
ITEM NO.	PART NUMBER	DESCRIPTION	QTY.
1	SVRCLMINIA	ASA STARLINK MINI ADAPTER CLAMP	1
2	SVRCLMINIB	ASA CLAMP WITH SET SCREW	1
3	SVRCLMINIC	ASA 1"-14 THREADED CLAMP HALF	1
4	SVRCLMINID	ASA ADAPTER LOCK WITH 316 SS INSERTS	1
5	RPODCLBSK1	RUBBER GASKET FOR 1" RAIL	1
6	RPODCLBSK1.125	RUBBER GASKET FOR 1.125" RAIL	1
7	RPODCLBSK1.25	RUBBER GASKET FOR 1.25" RAIL	1
8	142034BHCS	1/4"-20 X 3/4" BHCS	6
9	14LOCKWASHER	1/4" LOCK WASHER	6
10	M6WASHER	M6 STAINLESS STEEL WASHER	6
11	142012SET	SET SCREW (1.125" & 1.25" RAIL)	1
12	1420SET	SET SCREW (1" RAIL)	1
13	SP8	1-14 THREADED NUT	1



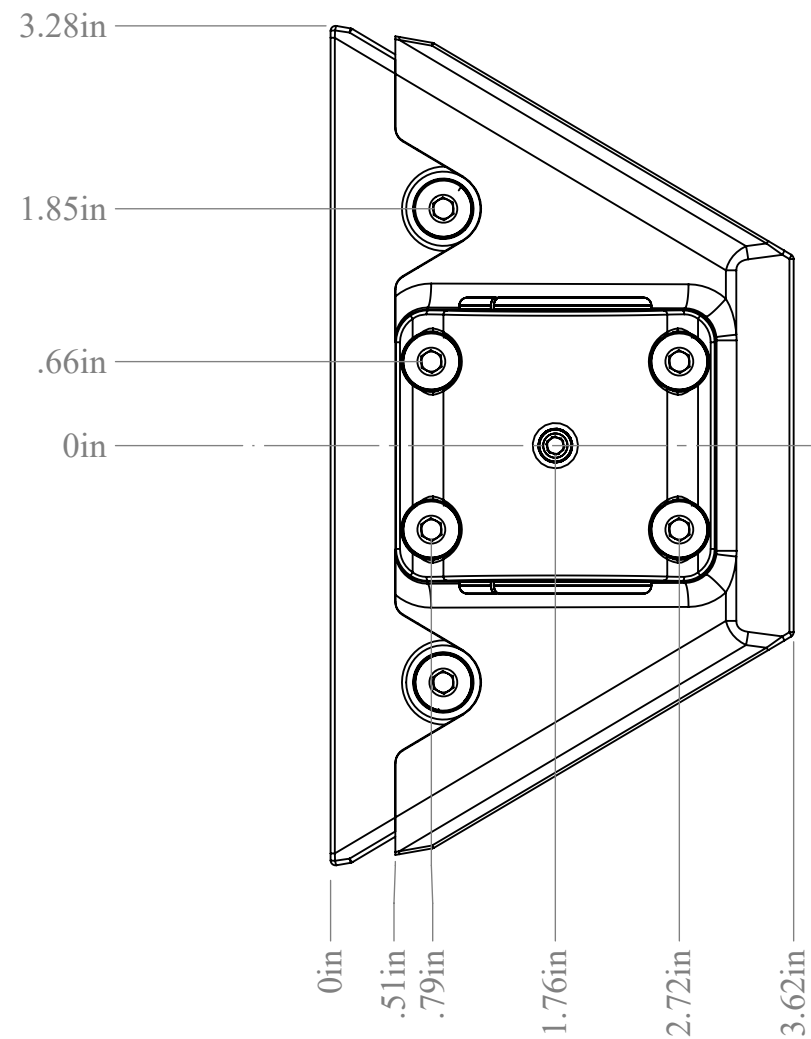
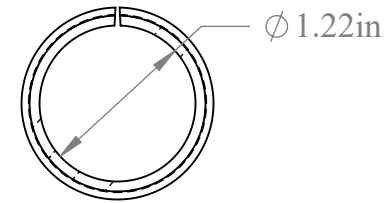
SVRCLMINI

Portions of this instruction manual may have been refined using artificial intelligence to enhance clarity and readability

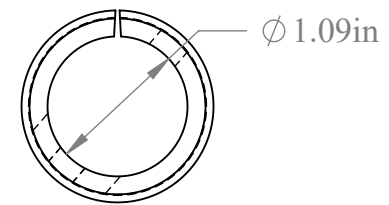
- Please note that some dimensions may not be shown (applies to all pages)
- Do not scale drawing (applies to all pages)
- For help e-mail info@seaviewglobal.com; ph. 1-800-655-7922



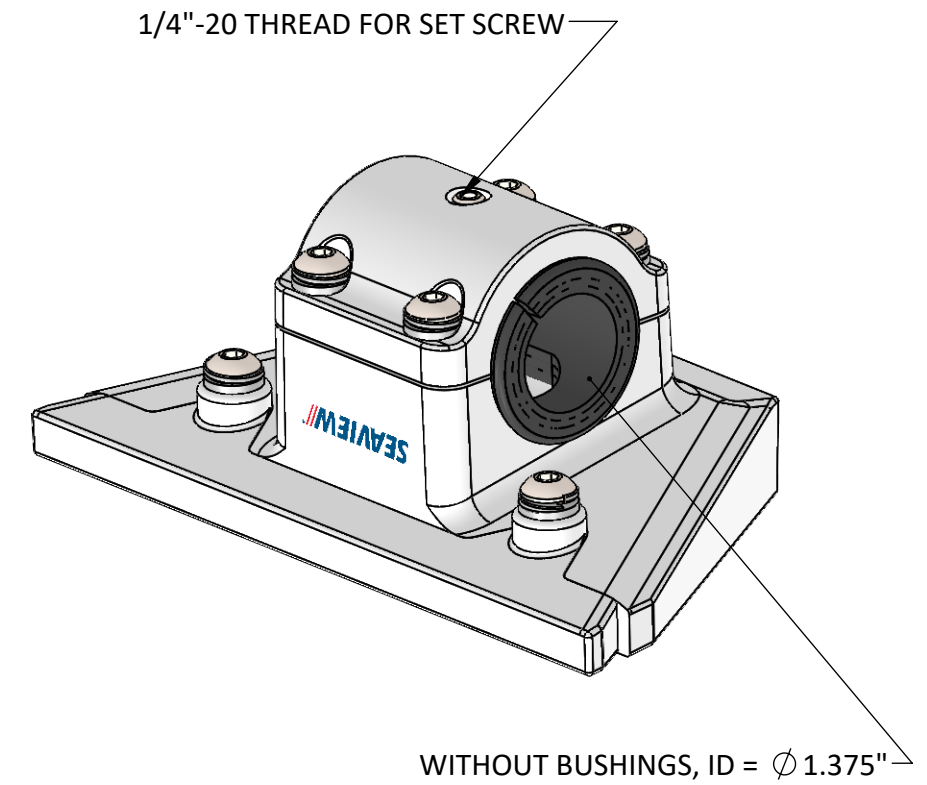
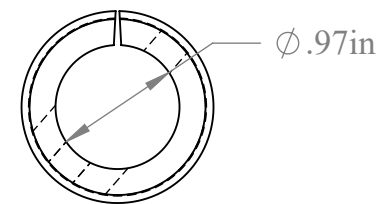
RPODCLBSK1.25



RPODCLBSK1.125

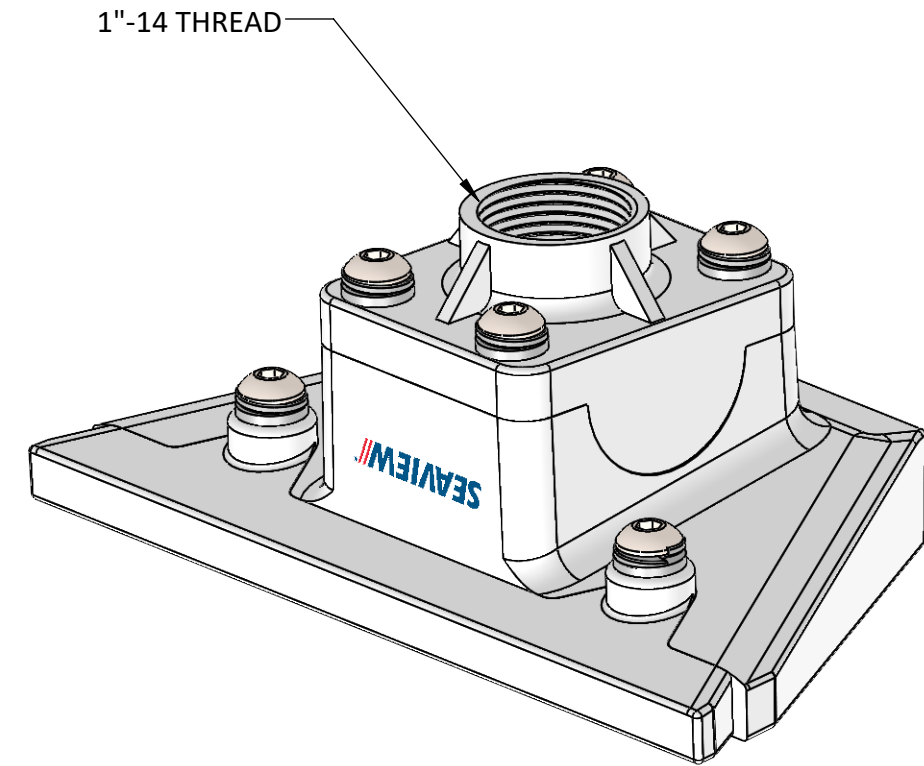
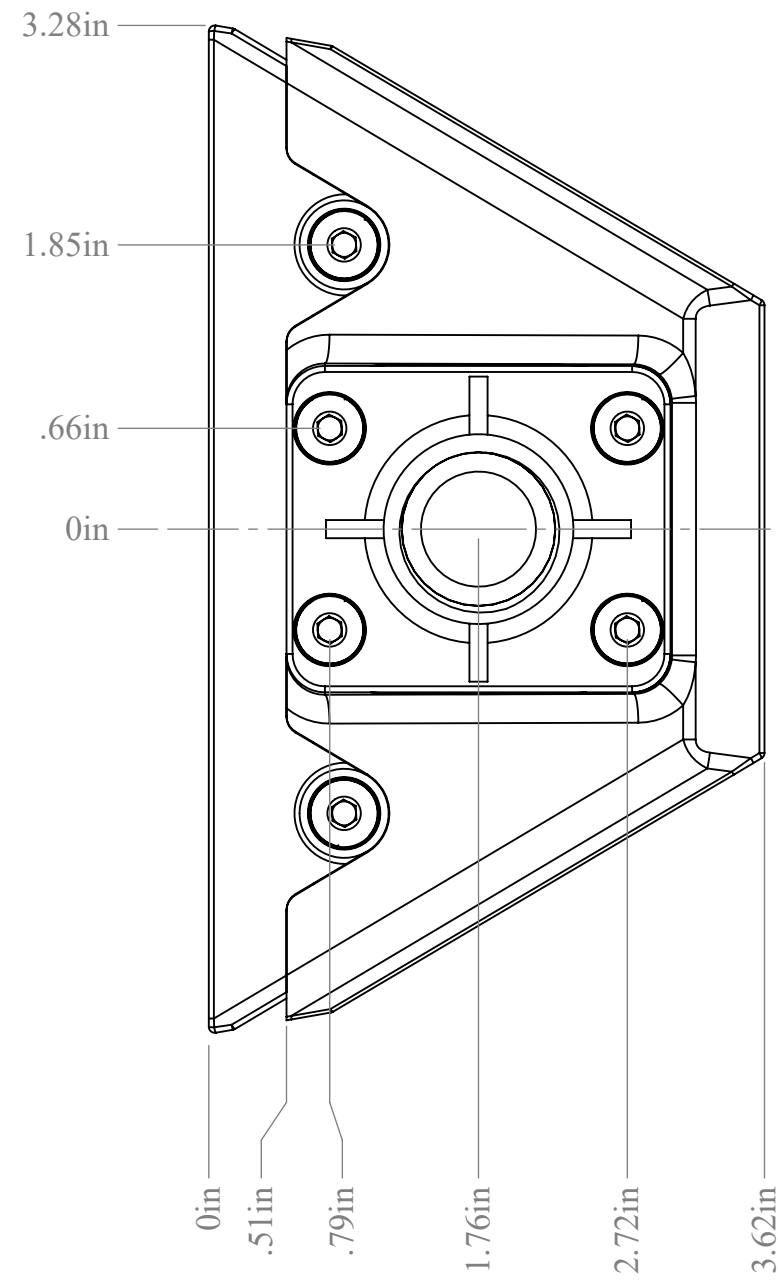
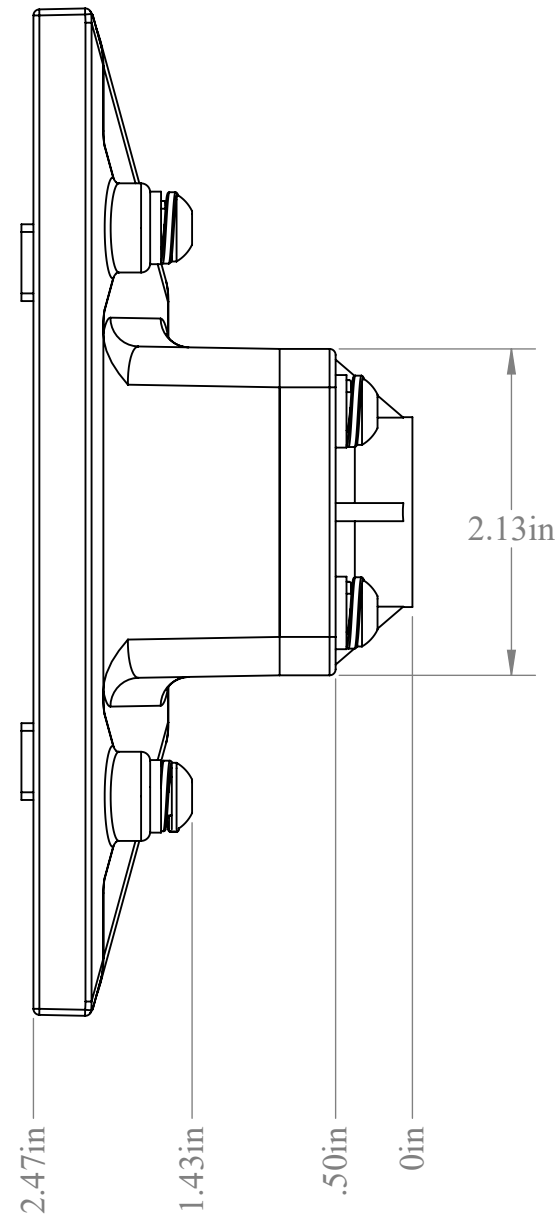


RPODCLBSK1



SVRCLMINI

For help e-mail
info@seaviewglobal.com
 ph. 1-800-655-7922



SVRCLMINI

For help e-mail
info@seaviewglobal.com
ph. 1-800-655-7922

INSTALLATION INSTRUCTIONS BEGIN ON NEXT PAGE

NOTE: It is strongly advised that all installations are carried out by an authorized installer who possesses the necessary expertise and experience in marine equipment installation. Furthermore, prior to the final installation process, we recommend performing a dry fit assembly of all components. This entails fitting the components in their designated positions on the boat without permanently affixing them. This step allows for careful assessment of compatibility, alignment, and any potential adjustments that may be required before proceeding with the actual installation.

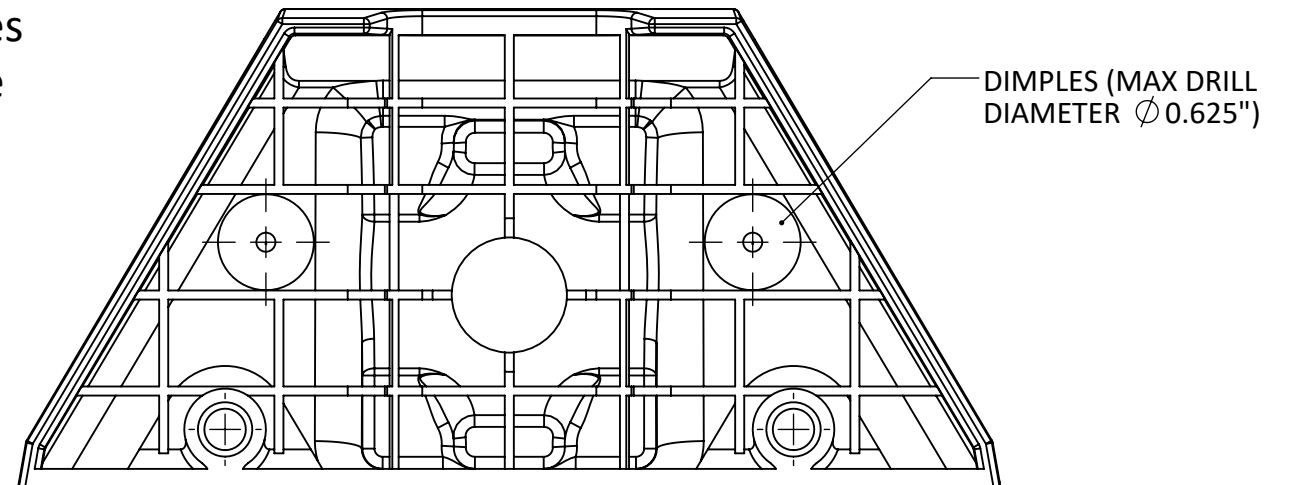
For help e-mail
info@seaviewglobal.com
ph. 1-800-655-7922

1 When mounting the Starlink Mini on a **rail**, begin by routing the cables through Item 1 from the Bill of Materials (BOM). If mounting to a **1"-14 threaded stud**, jump ahead to step 9. You may route the cables either through the center hole (Option 1) or externally by drilling through the designated dimples (Option 2).

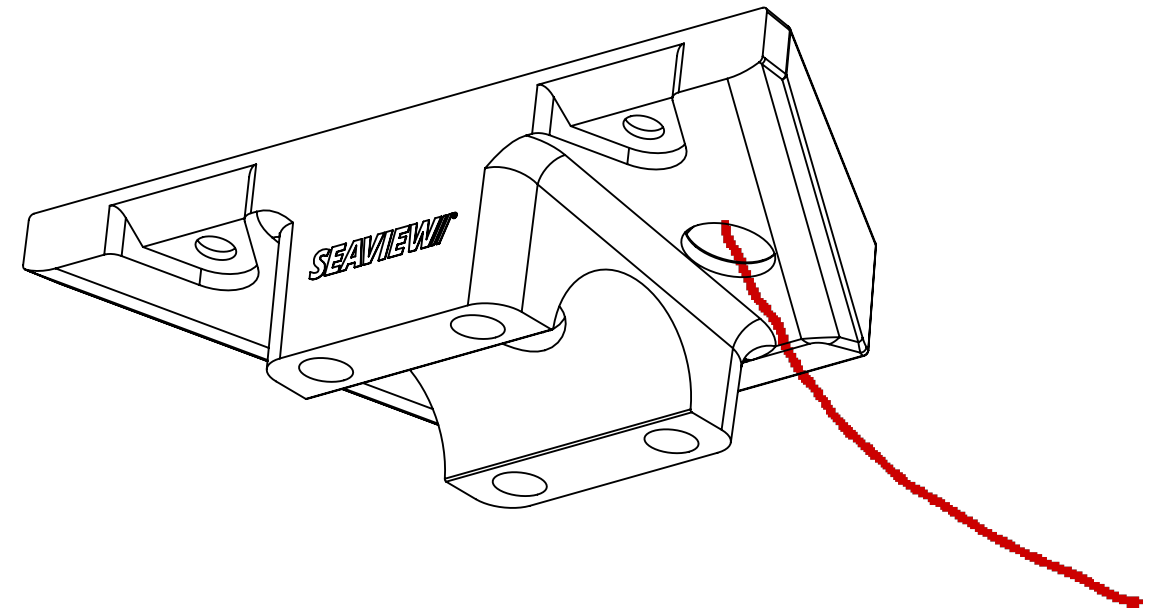
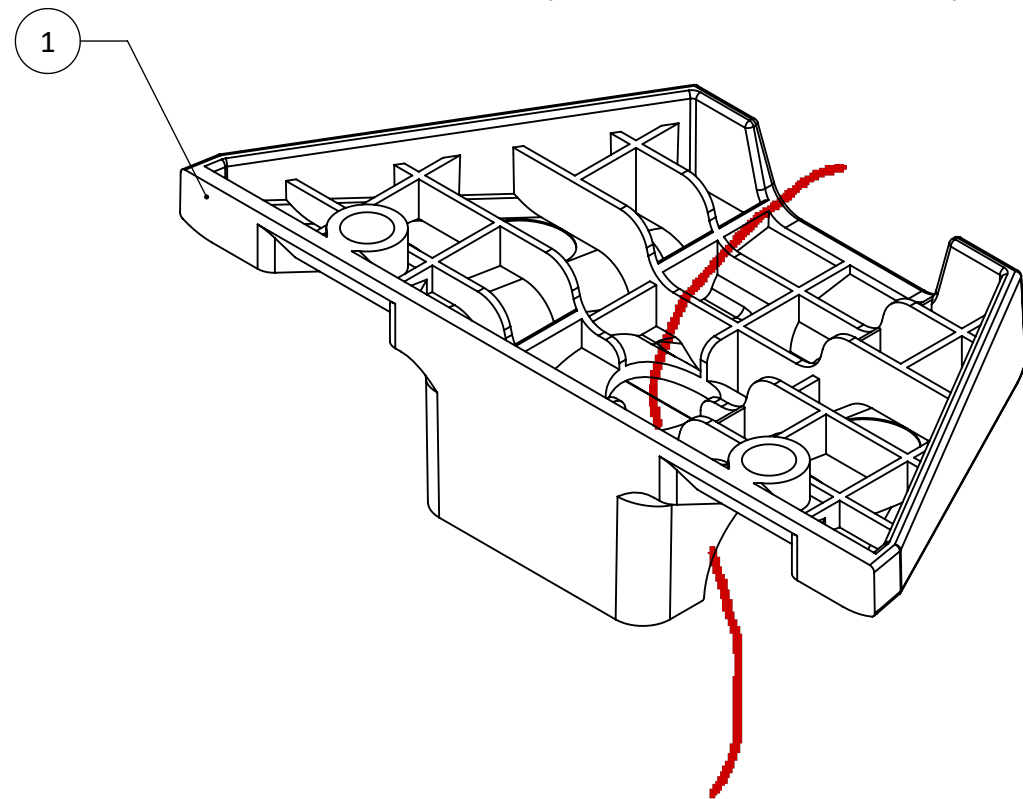
Option 1: Route the cable through the center hole.

Option 2: Locate the drill dimples on the interior of Item 1. Drill through the dimples using a drill bit with a maximum diameter of 5/8", then route the cable through the drilled hole.

OPTION2 (EXAMPLE WIRE IN RED)

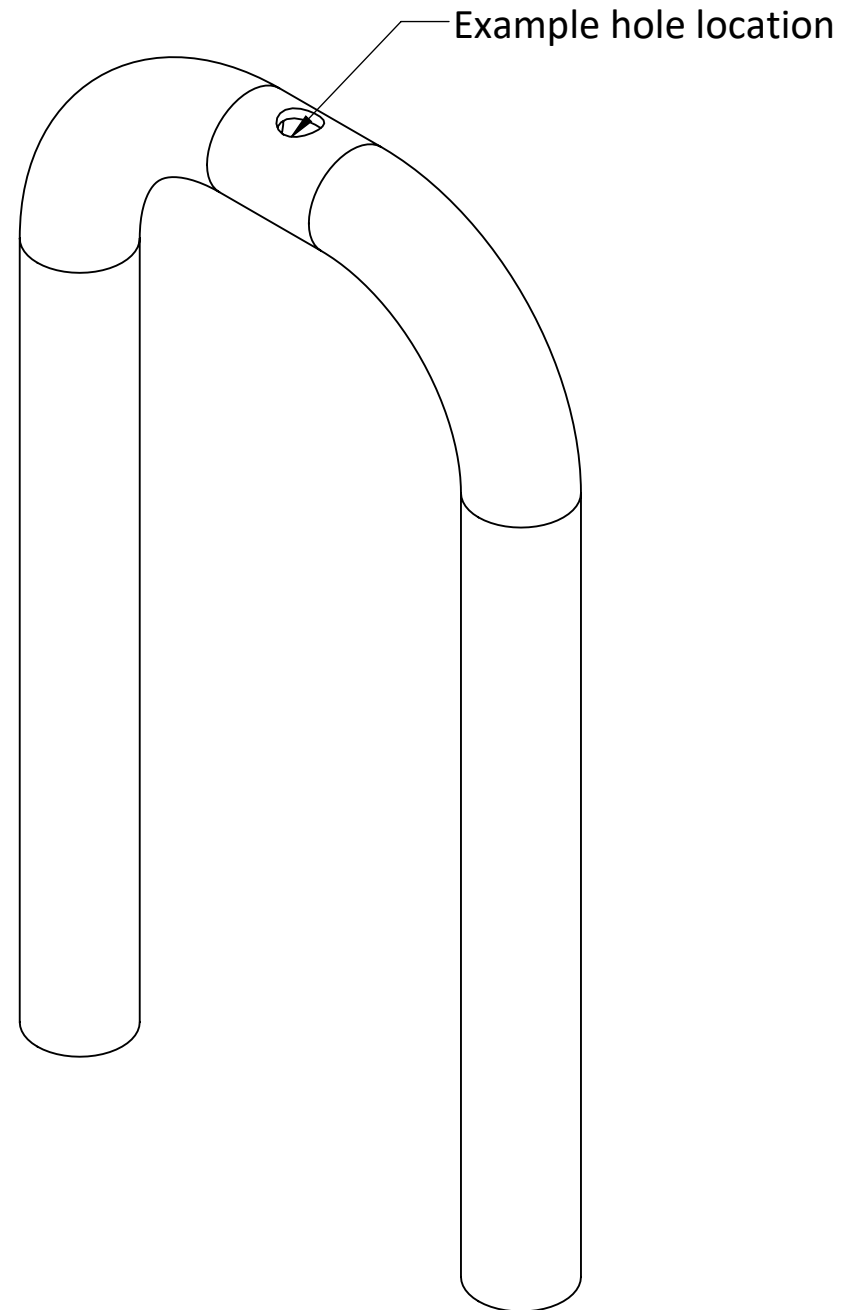


OPTION1 (EXAMPLE WIRE IN RED)



For help e-mail
info@seaviewglobal.com
ph. 1-800-655-7922

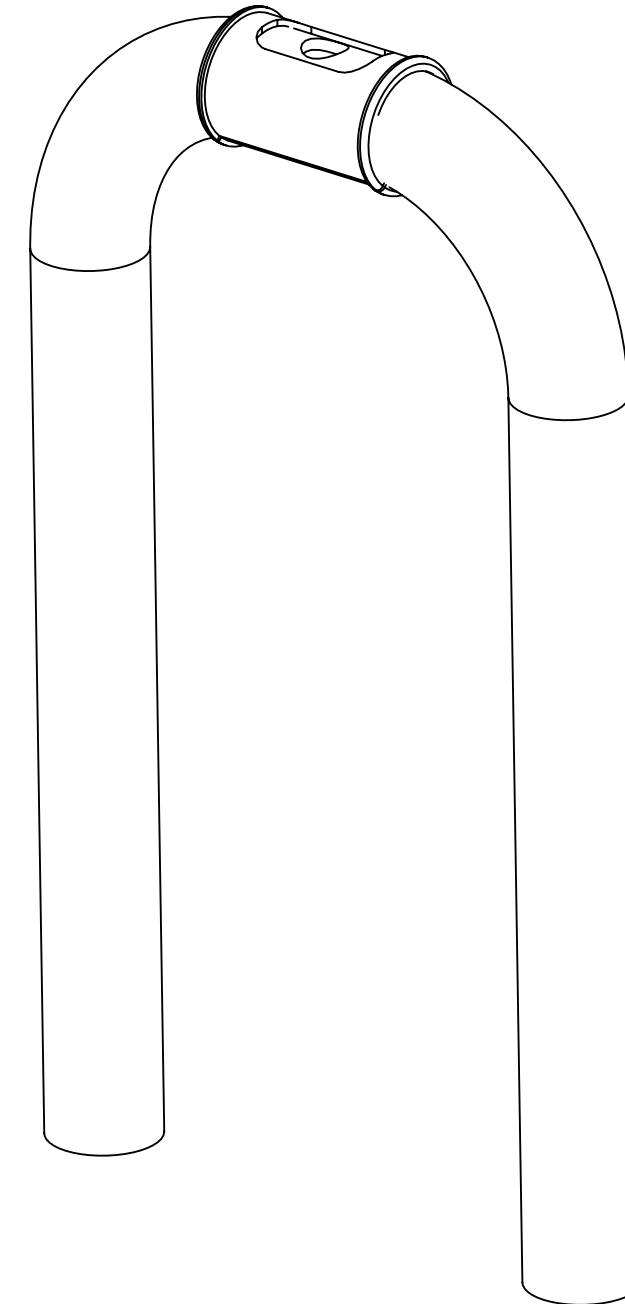
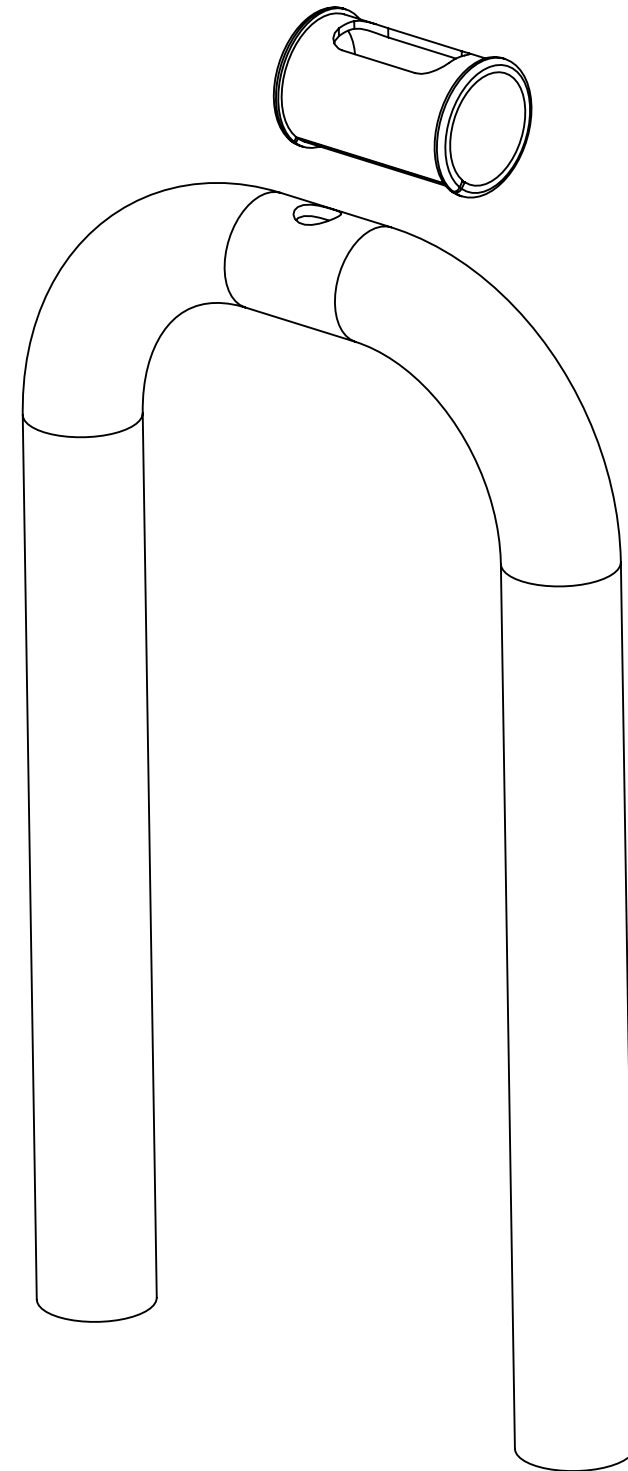
2 If following Option 1 from the previous step, use a hole saw to drill a hole in the rail to pass the cables through.



For help e-mail
info@seaviewglobal.com
ph. 1-800-655-7922

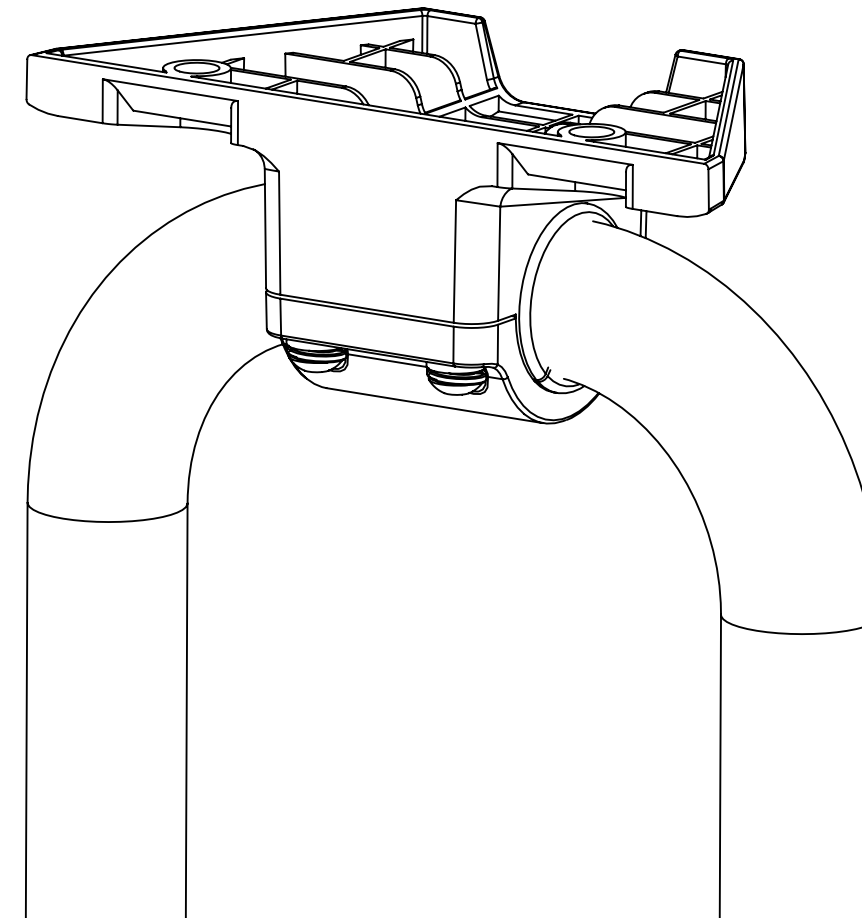
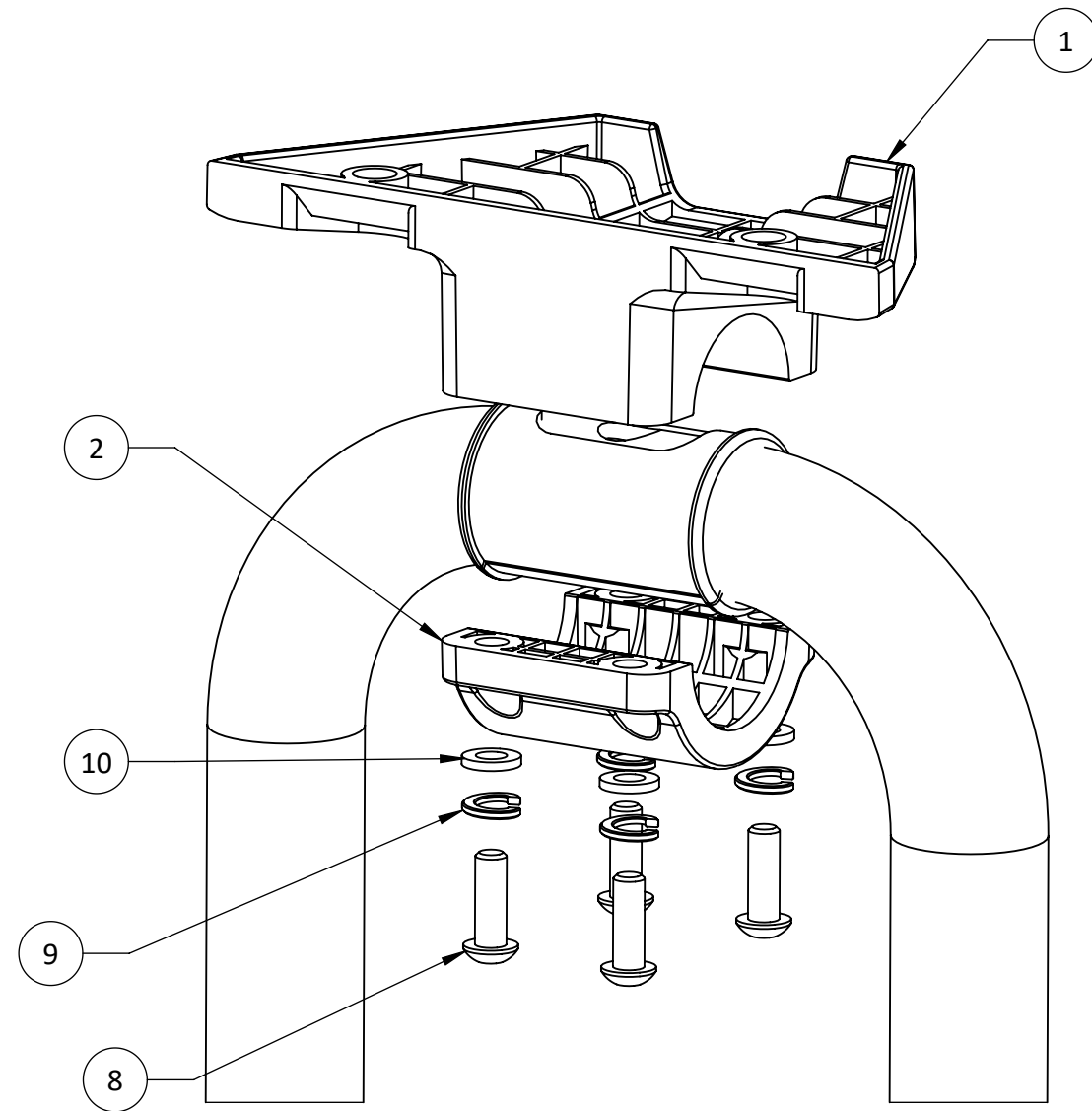
3 Use the appropriate gasket for your application, and place it on the rail. Be sure to align the opening in the gasket with the hole.

SEAVIEW®



For help e-mail
info@seaviewglobal.com
ph. 1-800-655-7922

4 Install the clamp assembly as shown. If rail curvature makes it difficult to press the clamp halves together, temporarily using longer 1/4"-20 bolts may help reduce the gap between components **1** and **2**.

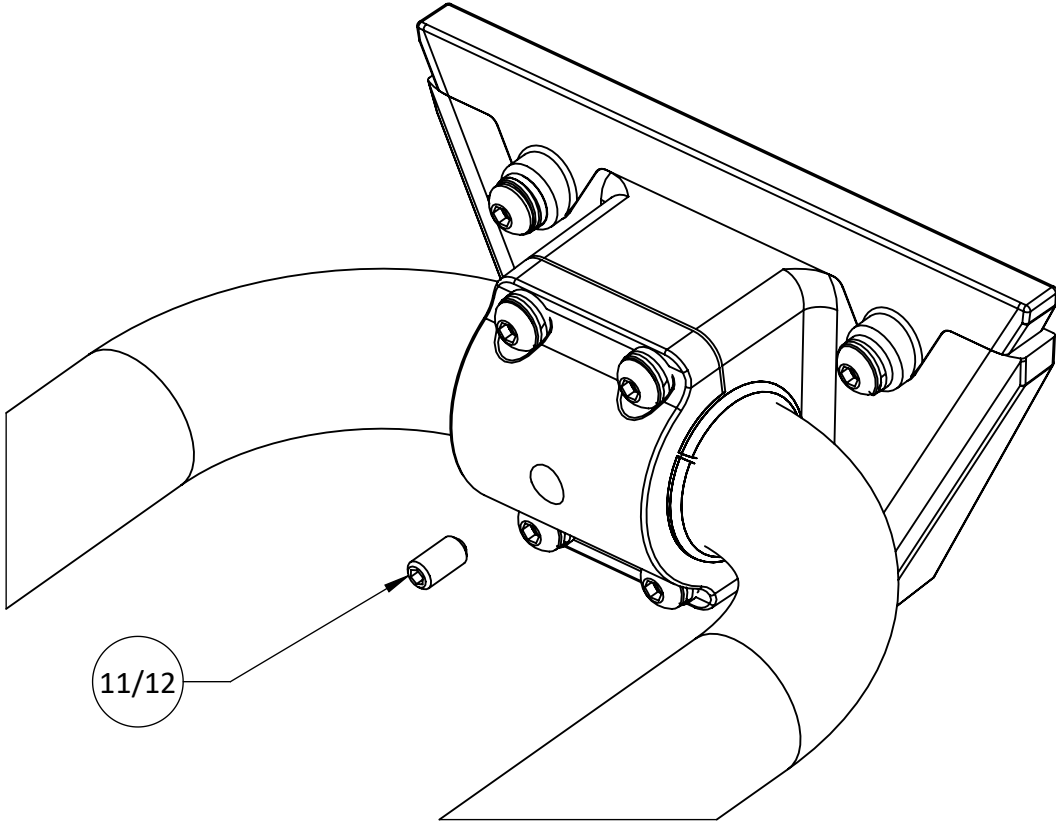


For help e-mail
info@seaviewglobal.com
ph. 1-800-655-7922

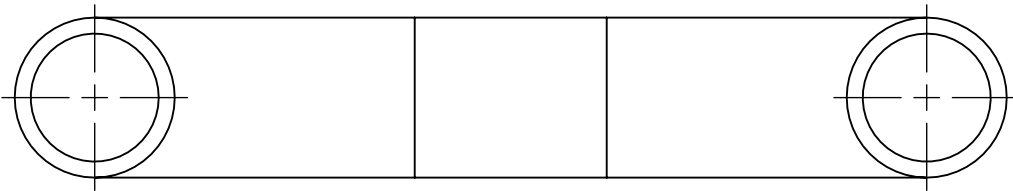
5 Install the shorter set screw (item 10 in BOM) when fitting to a 1.25" or 1.125" diameter rail. Use the longer set screw (item 9 in BOM) when fitting to a 1" diameter rail. Note that rail diameters may vary slightly between users.

It is also recommended to use the longer set screw whenever the clamp is mounted on a curved portion of the rail. Depending on the rail's curve geometry, a longer set screw may be required.

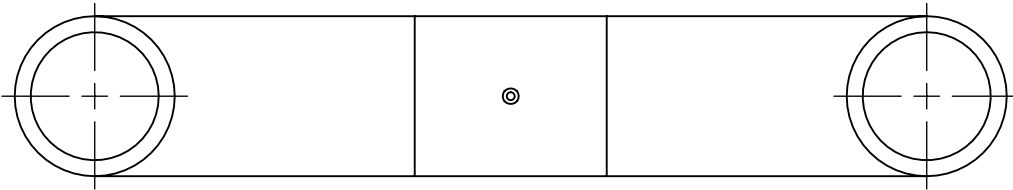
For increased holding power, consider adding a dimple or drilling and tapping the rail (1/4"-20). A longer screw may be necessary if drilling and tapping the rail. Use Loctite or a similar thread-locking compound on set screw (item 11 / 12).



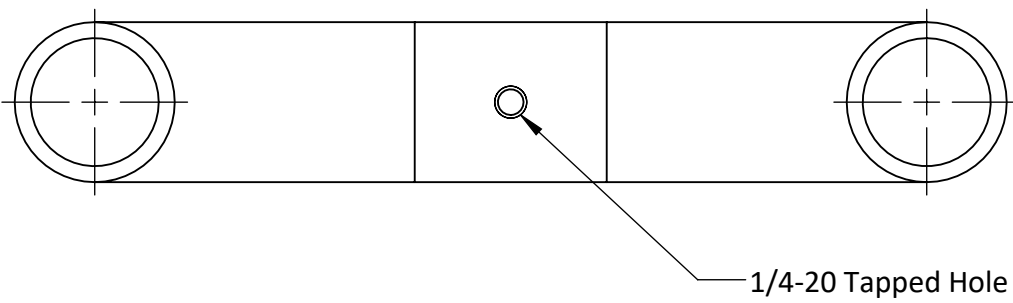
BOTTOM VIEW (BLANK RAIL; CLAMP NOT SHOWN)



BOTTOM VIEW (RAIL DIMPLE; CLAMP NOT SHOWN)

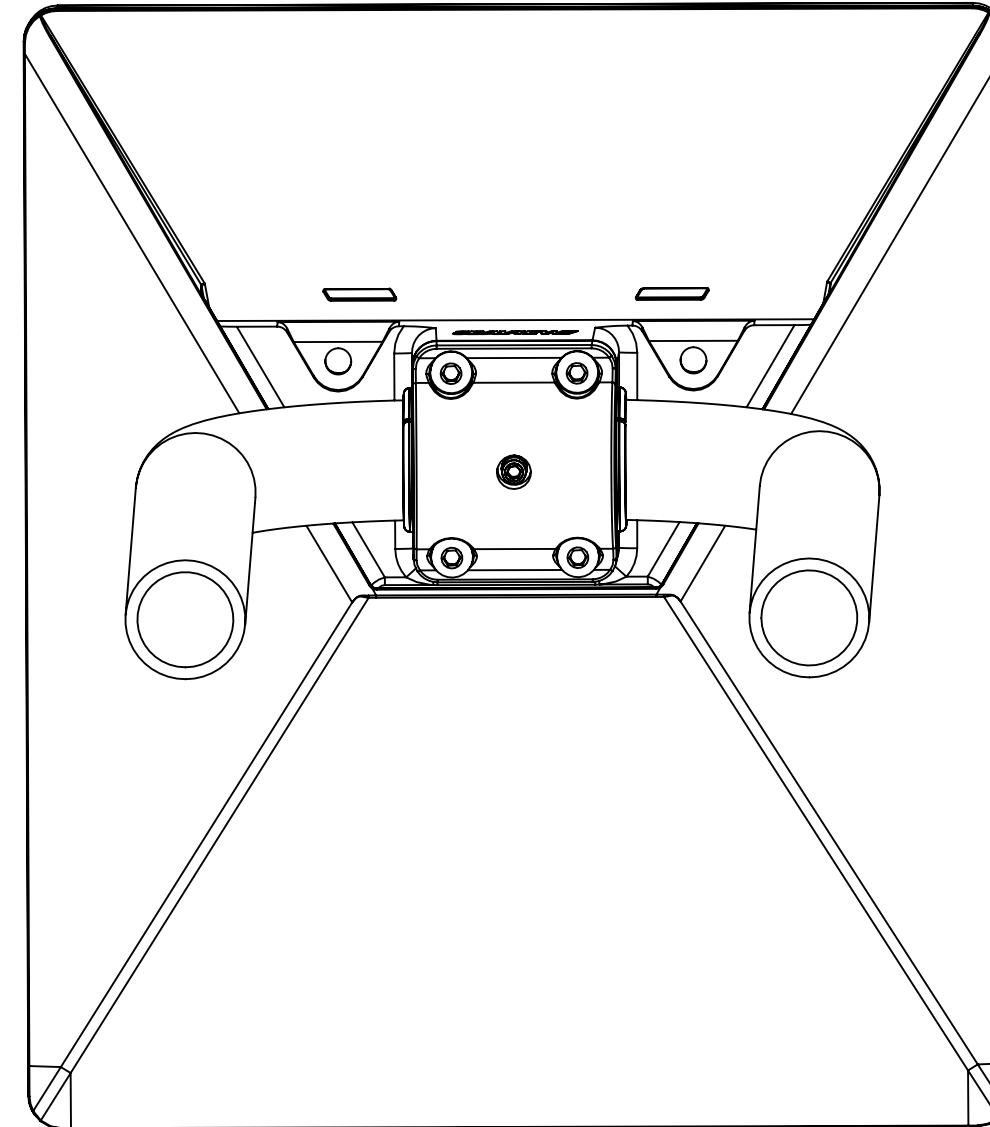
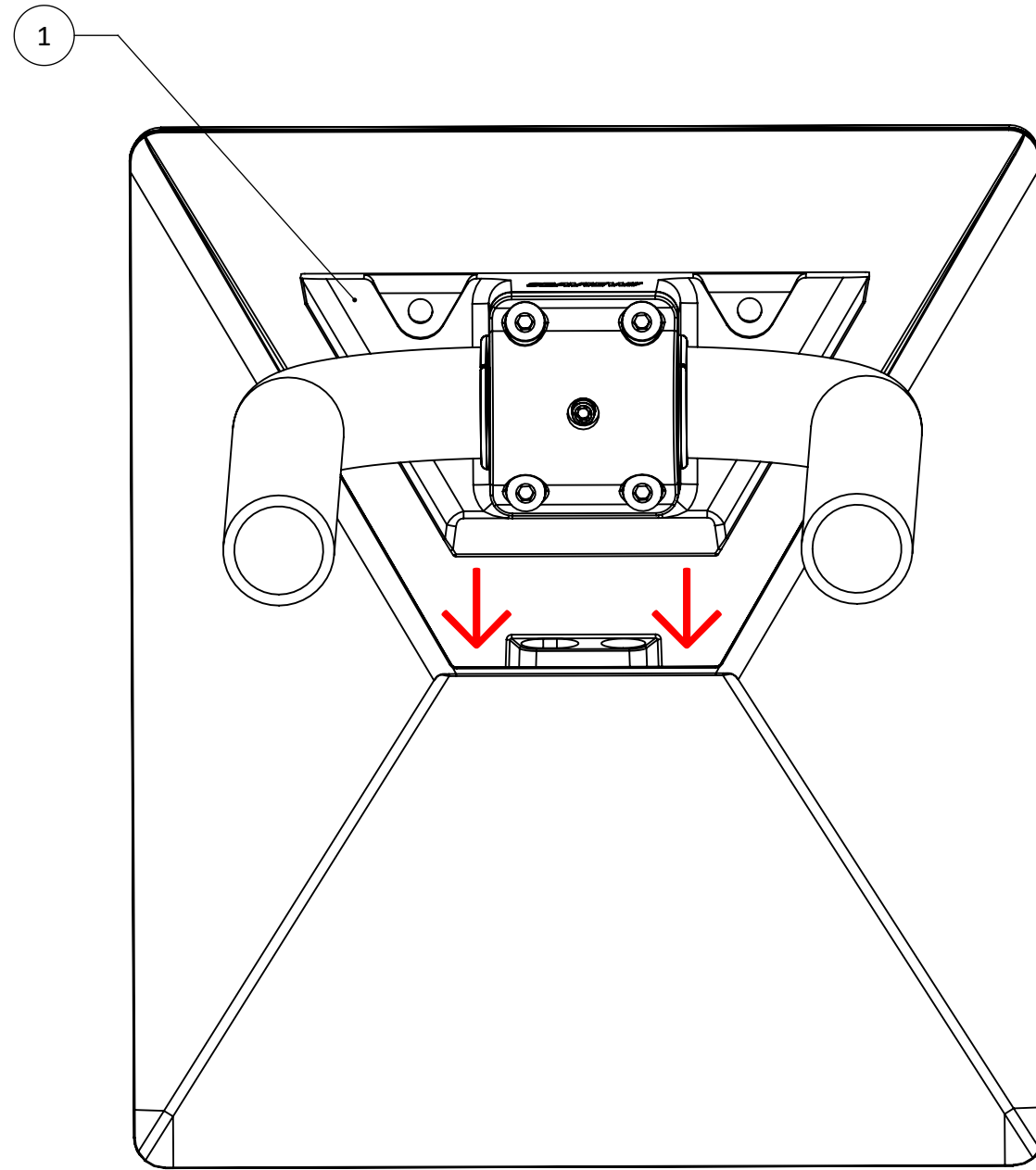


BOTTOM VIEW (TAPPED HOLE; CLAMP NOT SHOWN)



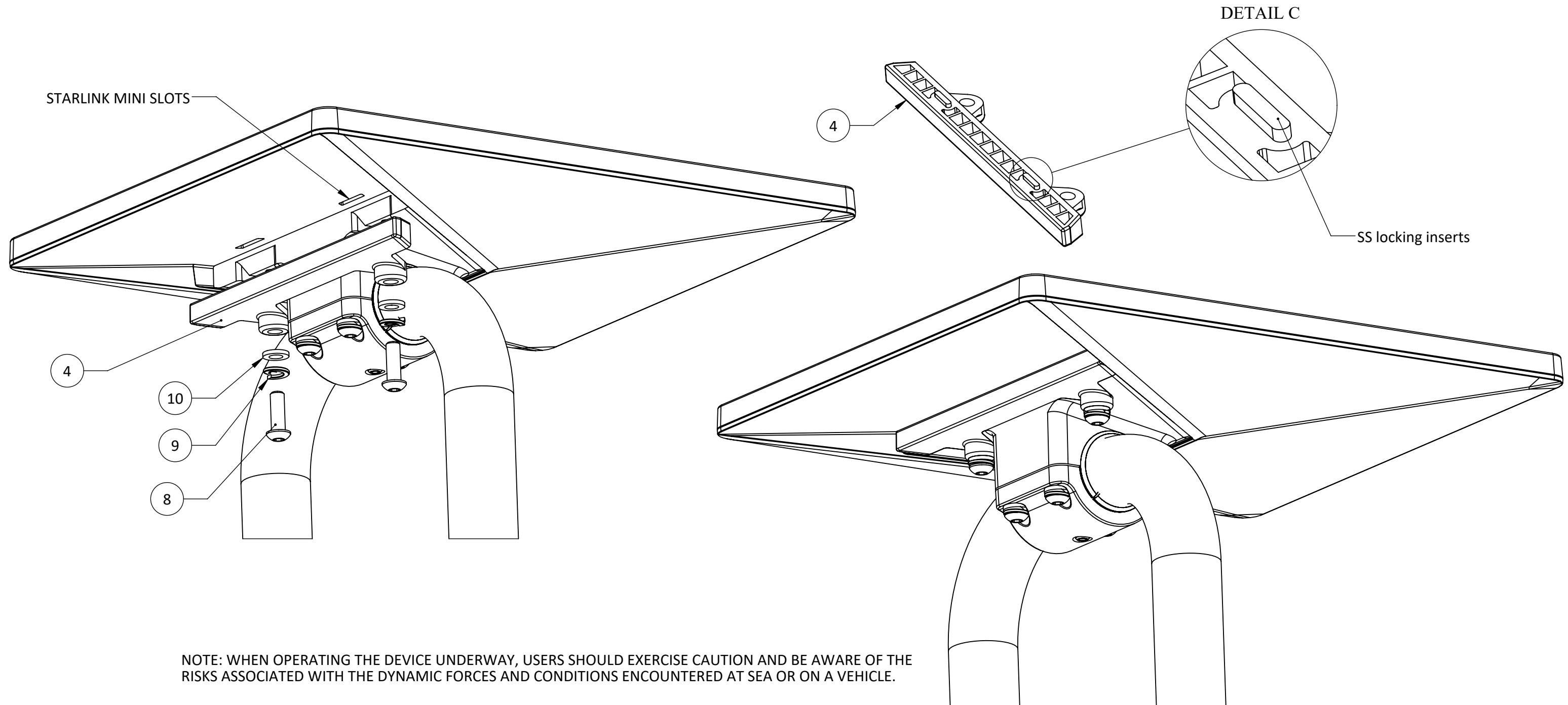
For help e-mail
info@seaviewglobal.com
ph. 1-800-655-7922

6 Remove the kickstand from the Starlink Mini. Then, slide the Starlink Mini antenna onto item one as shown below. Apply firm pressure to ensure that antenna is fully secured and seated onto item **1**.



For help e-mail
info@seaviewglobal.com
ph. 1-800-655-7922

7 Install items **4** and **8** - **10** as illustrated below. Ensure the SS locking inserts (detailed in Figure C) are fully seated in the Starlink Mini slots to securely fasten the antenna.



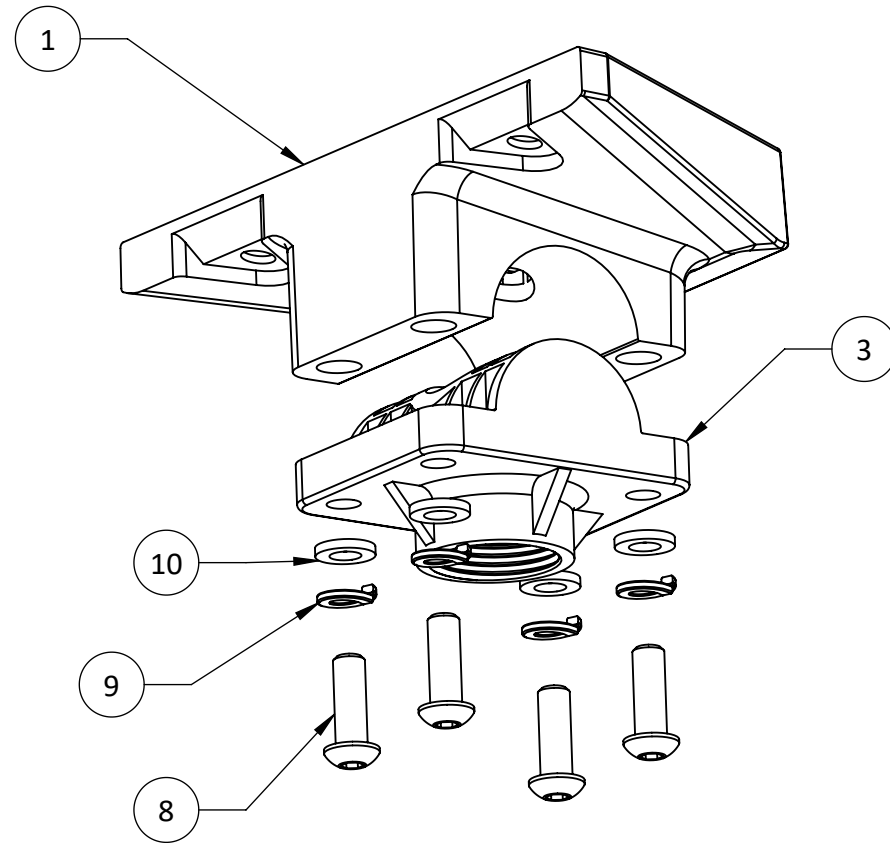
NOTE: WHEN OPERATING THE DEVICE UNDERWAY, USERS SHOULD EXERCISE CAUTION AND BE AWARE OF THE RISKS ASSOCIATED WITH THE DYNAMIC FORCES AND CONDITIONS ENCOUNTERED AT SEA OR ON A VEHICLE.

For help e-mail
info@seaviewglobal.com
ph. 1-800-655-7922

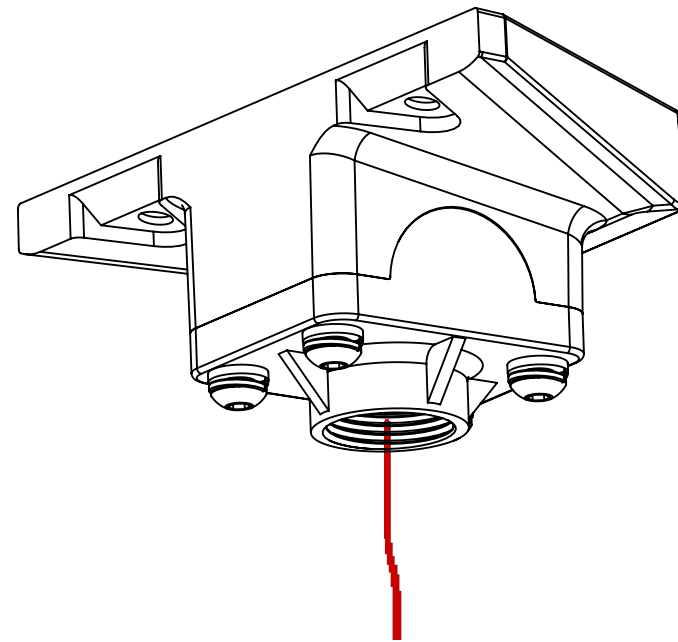
8 Users may opt to utilize item **3** from the Bill of Materials (BOM) to adapt the Starlink Mini to a 1"-14 thread. You may route the cables either through the center hole (Option 1) or externally by drilling through the designated dimples (Option 2). To avoid twisting/pinching the Starlink cable, attach item **3** to item **1** before routing cable.

Option 1: Route the cable through the center hole.

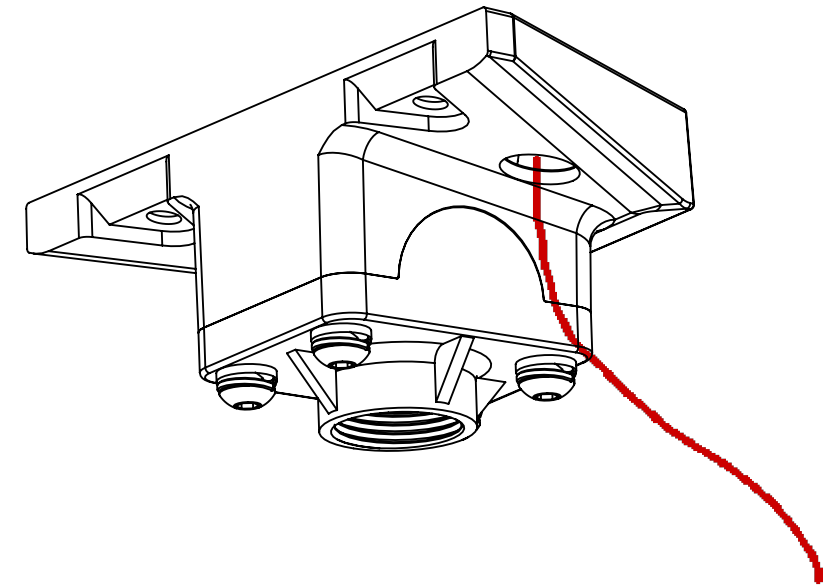
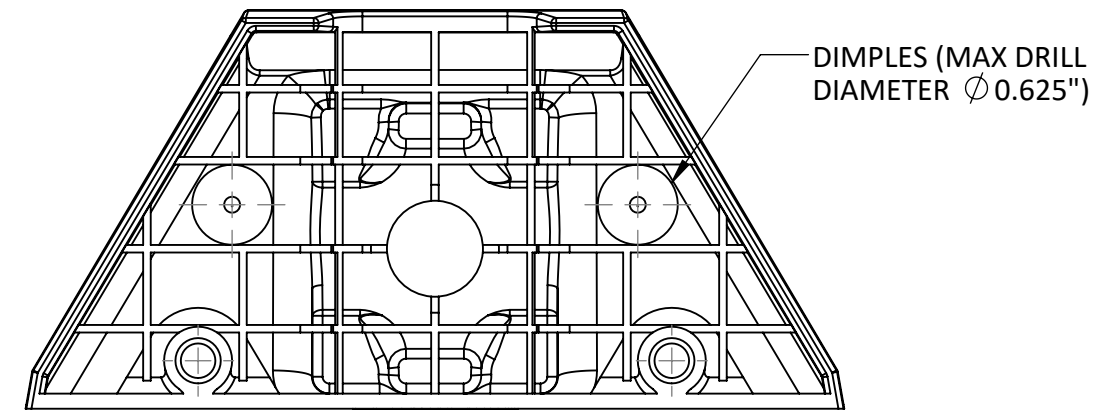
Option 2: Locate the drill dimples on the interior of Item **1**. Drill through the dimples using a drill bit with a maximum diameter of 5/8", then route the cable through the drilled hole.



OPTION1 (EXAMPLE WIRE IN RED)

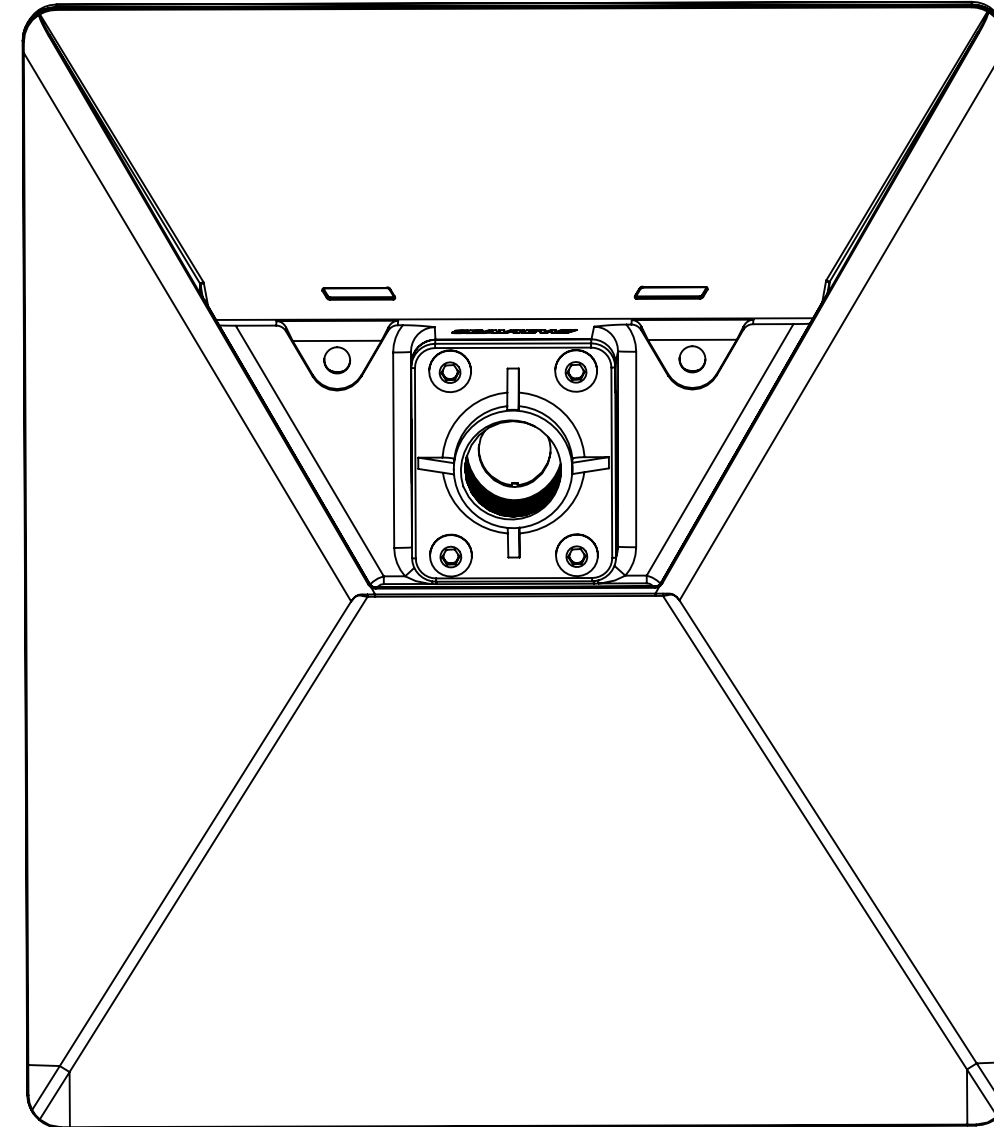
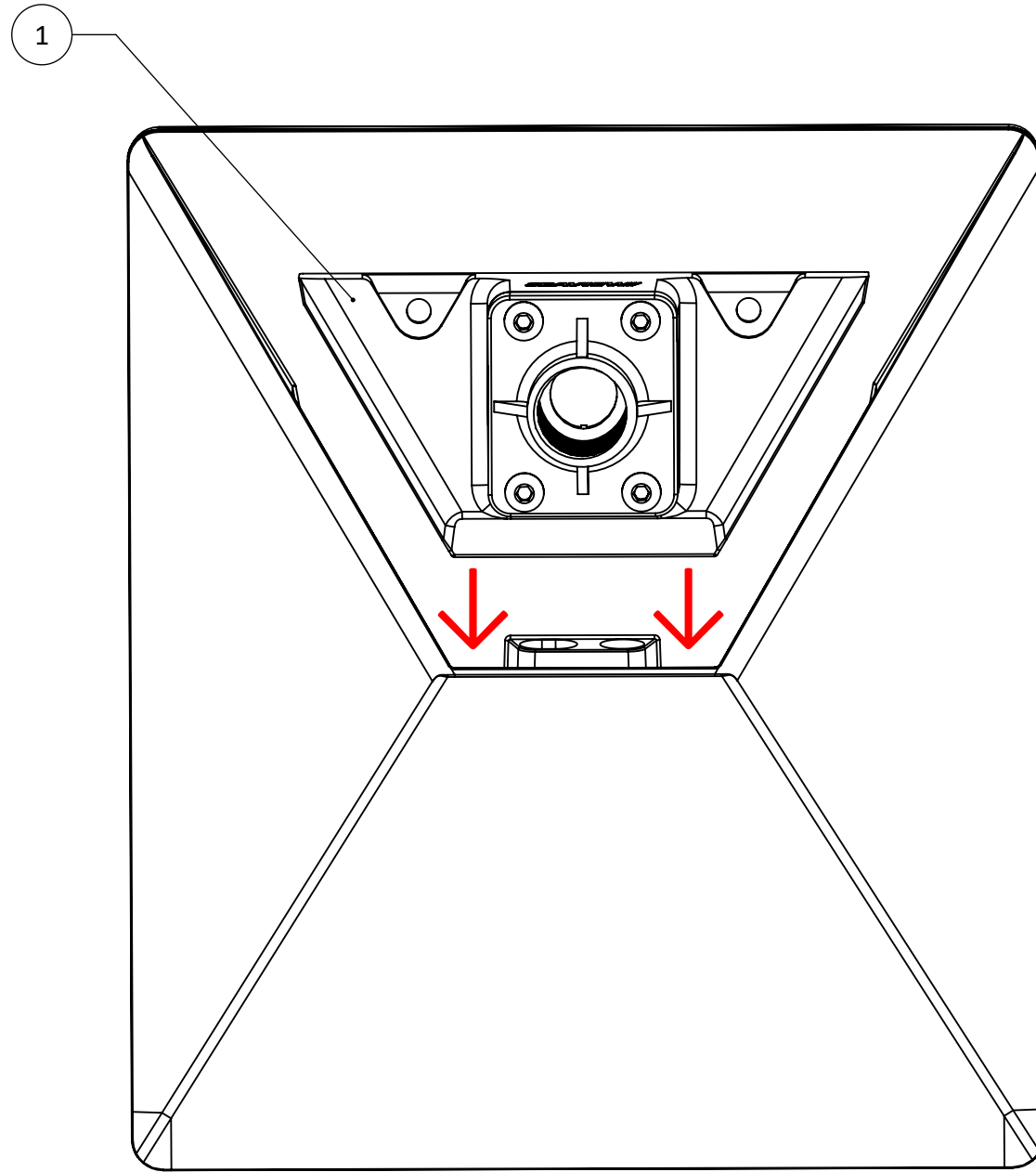


OPTION2 (EXAMPLE WIRE IN RED)



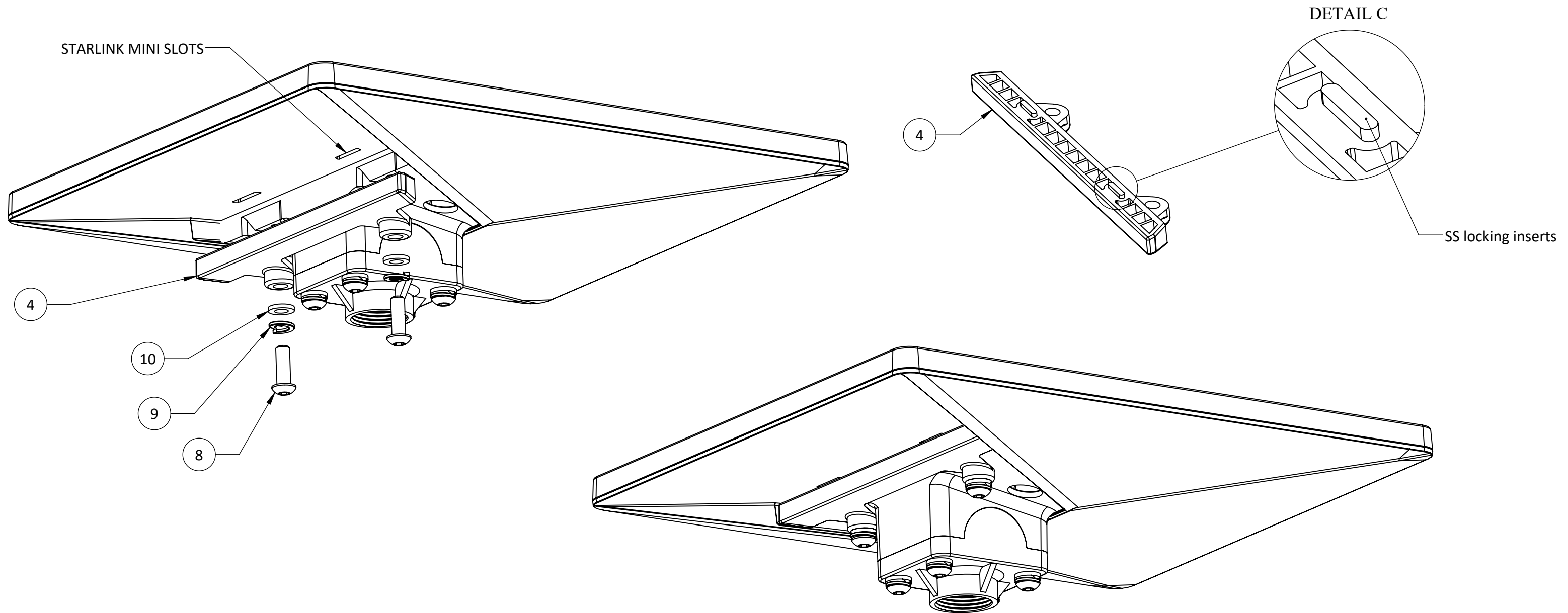
For help e-mail
info@seaviewglobal.com
ph. 1-800-655-7922

9 Remove the kickstand from the Starlink Mini. Then, slide the Starlink Mini antenna onto item one as shown below. Apply firm pressure to ensure that antenna is fully secured and seated onto item **1**.



For help e-mail
info@seaviewglobal.com
ph. 1-800-655-7922

10 Install items 4 and 8 - 10 as illustrated below. Ensure the SS locking inserts (detailed in Figure C) are fully seated in the Starlink Mini slots to securely fasten the antenna.

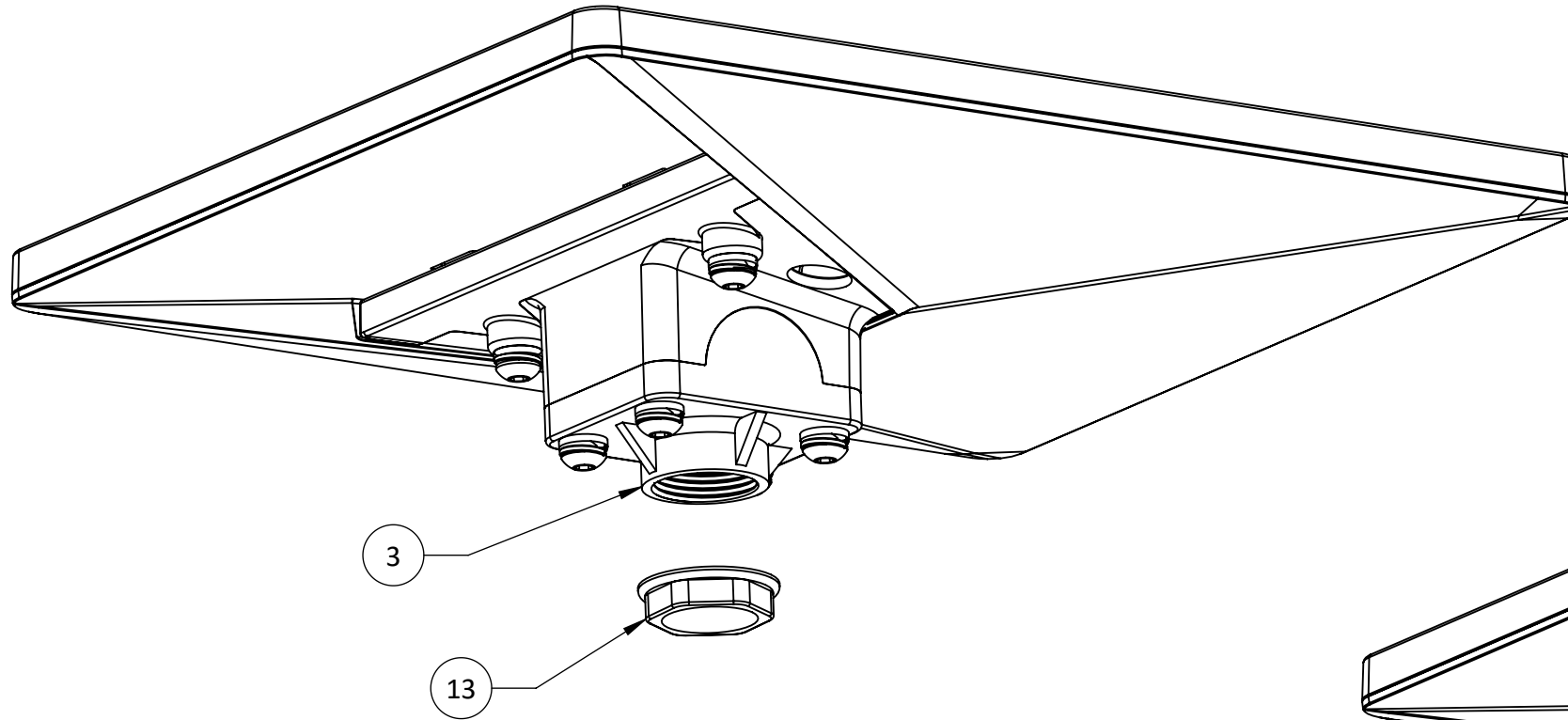


For help e-mail
info@seaviewglobal.com
ph. 1-800-655-7922

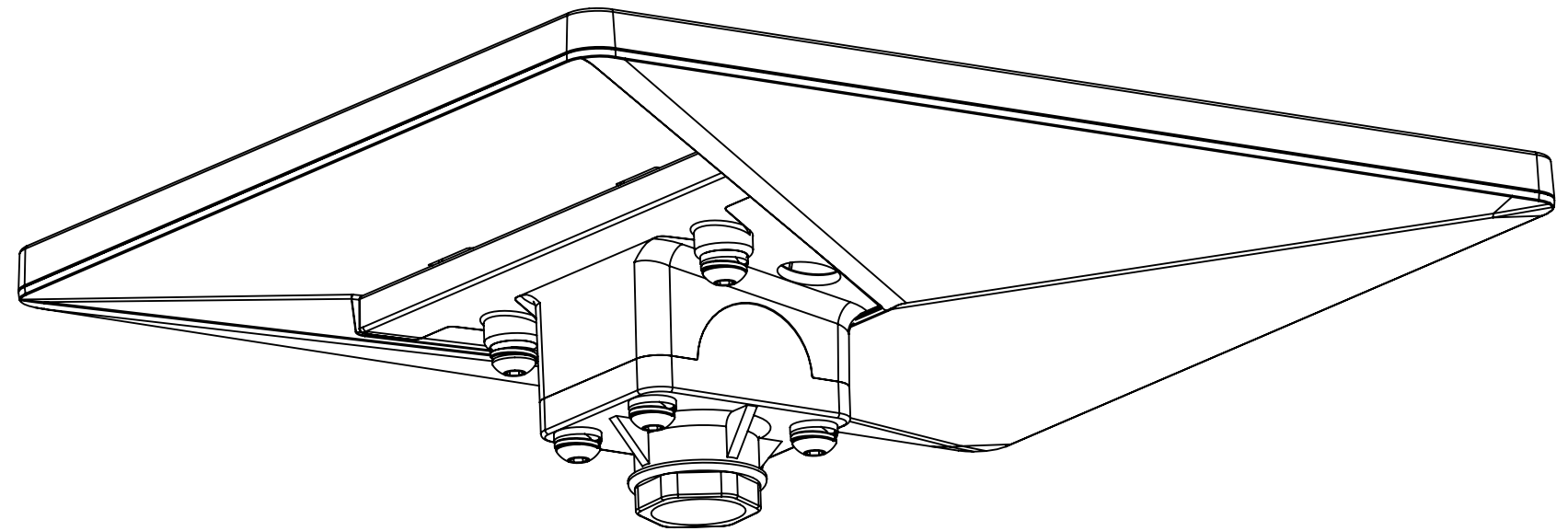
11

Before mounting SVRCLMINI, thread item (13) onto 1-14 stud. Then do the same with the 1-14 threads on item (3) until it is making full contact with the threaded nut (item (13)) and securely attached to the stud.

SEAVIEW[®]



NOTE: THE THREADED NUT WILL ACT AS A STOPPER, ALLOWING YOU TO ORIENT YOUR STARLINK MINI HOW YOU WISH ON THE STUD.



NOTE: WHEN OPERATING THE DEVICE UNDERWAY, USERS SHOULD EXERCISE CAUTION AND BE AWARE OF THE RISKS ASSOCIATED WITH THE DYNAMIC FORCES AND CONDITIONS ENCOUNTERED AT SEA OR ON A VEHICLE.

For help e-mail
info@seaviewglobal.com
ph. 1-800-655-7922